

**Monday 21st
November, 2022
6.30pm start**

Property auction catalogue

**The Double Tree by Hilton Hotel
Festival Park
Stoke-on-Trent
Staffordshire, ST1 5BQ**

butters^{bjb}
john bee
haart **HAYBROOK**
Darlows



Property auctions

The Double Tree by Hilton Hotel, Stoke-on-Trent, ST1 5BQ

Auction dates 2023

23rd January

27th February

03rd April

08th May

12th June

17th July

11th September

16th October

20th November

Closing date for entries

2nd December

13th January

24th February

31st March

05th May

09th June

04th August

08th September

13th October

All auctions start at 6.30pm

Freehold & Leasehold Lots offered in conjunction with...



The region's number 1 property auctioneer



Leanne Roberts,
Auction Administrator
& John Hand,
Auction Manager

butters john bee^{bjb}

Traditional Auctioneers with over 150 years' experience of selling Residential & Commercial property and Land.

Auction is the quickest and easiest way to buy and sell property in today's modern property market, the increasing popularity of online bidding means you can buy and sell with us anywhere nationwide. Throughout 2022 our sales have gone from strength to strength and we continue to push the boundary further working with **Darlows**, **Haybrook** and **haart** part of our wider group, meaning greater nationwide cover



Whether buying or selling you're in safe hands, our award winning Auction Dept. is backed by a network of Residential offices, Area Partners, and dedicated Commercial and Land & New Homes teams, so you can be sure you are getting the best specialist advice and expert local knowledge from one of our property professionals based in the area

One Stop Lot Shop - Our **Just Mortgages** financial services can assist with all your mortgage and insurance requirements, **Valunation** can help you with your survey needs nationwide, and we can recommend a good local Conveyancer, we also have Residential and Commercial Lettings agencies.

Any queries about buying or selling at auction then contact the team on 0800 090 2200, or email auction@bjbmail.com, and we will be happy to help.

Proof of identity and address

All prospective bidders must register and provide proof of identity and address to the Auctioneers prior to the start of the sale.

Original documents **MUST** be provided.

Photocopies are **NOT** acceptable.

You will need to register before the auction starts if you are intending to bid, as we are required to verify anyone who offers, bids, or buys at butters john bee auctions.

In each case, for proof of ID we will need one item from List A, (if you cannot produce any of the items on list A, then you must produce two of the items on list B). For proof of address one item from List C (If an item is used from List B for the purposes of identity, the same item may NOT be used for the purposes of proof of address) Failure to produce the correct ID will mean you will NOT be eligible to bid on the night.

There are a few options available to you:

- Go to any of our 17 branches, or head office, with your original paperwork, we will then verify for you free of charge
- The Post Office can verify up to three forms of identification, there is however a charge for this service
- A professional body (solicitor, accountant etc.) can also certify your ID and directly send it on your behalf to auctions@bjbmail.com (please note these parties may make a charge directly to you)
- You can bring the relevant documents to the auction venue between 5.00pm and 6.30pm to register free of charge

If you intend to bid via the Internet, Telephone or Proxy, we will require this information prior to the day of the auction. If we do not receive certified identification, we will be unable to bid on your behalf.

If you are bidding on behalf of a company, you will also need to show a copy of the Certificate of Incorporation, a list of directors and a letter of authority on Company letterhead, signed by a company director, prior to signing the contract.

List A – proof of ID

- Current valid (signed) full UK Passport.
- Current valid (signed) overseas Passport.
- Current UK Photocard Driving Licence (provisional acceptable).
- Current EU Photocard Driving Licence.
- Current valid EEA Member State ID card.
- Current biometric residence permit issued by UK Border Agency.
- Current Firearms/Shotgun Certificate.

List B – proof of ID

- 🟡 Bank, Building Society or Credit Union Statement dated within the last 3 months (not printed off the internet).
- 🟡 Benefits or pensions notification letter confirming the right to benefit.
- 🟡 Blue disabled drivers pass.
- 🟡 Current UK paper driving licence.
- 🟡 Local authority tax bill/council tax bill (we can only accept bills dated until the end of June of the year the client contract is signed).
- 🟡 Medical Card/Certificate.
- 🟡 National Insurance Card.
- 🟡 UK Birth Certificate.
- 🟡 Utility Bill/Utility Statement or Certificate/Letter from a supplier of utilities dated within the last 3 months.

List C – proof of address

- 🟡 Bank Statement (dated in the last three months) - may be an e-copy
- 🟡 Credit Card Statement (dated in the last three months) - may be an e-copy
- 🟡 Council Tax bill (we can only accept bills dated until the end of June of the year the client contract is signed)
- 🟡 Current mortgage statement (correspondence address and address the mortgage applies to must be the same)
- 🟡 Current TV licence
- 🟡 Driving licence showing current address (paper OR card version) (provisional acceptable) (not acceptable if used as ID)
- 🟡 Homeowner's current home insurance policy schedule
- 🟡 Home service provider bill, such as broadband or digital TV dated within the last three months
- 🟡 Letter from the employer on company headed paper, signed and dated within the last three months (an email from a verified company email address is acceptable)
- 🟡 Recent documentation confirming the applicant will be/is receiving local housing allowance or housing benefit
- 🟡 Tenancy agreement signed and dated within the last six months (the customer being checked must be a named tenant on the tenancy agreement)
- 🟡 Utility bill dated within the last three months
- 🟡 Letter from the NHS writing to confirm the customer is living at the address
- 🟡 Letter from bank to confirm the customer is living at the property - no other bank letter is acceptable

The following forms of proof of address are not acceptable:

- | | |
|---|-----------------------|
| 1. HM Revenue & Customs documents | 3. Mobile phone bills |
| 2. Letters from accountants or solicitors | 4. NHS medical card |

Property auction

buyer's guide

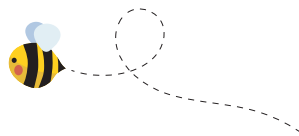
Buying at auction is becoming far more popular with the public, many of whom have never previously attended a property auction. We have drawn up some basic guidelines to ensure that clients maximise their opportunity to take advantage of such a wide variety of properties available at one venue.

- Think ahead, butters john bee hold regular auction sales with a catalogue printed some weeks in advance. Either buy a catalogue from one of our offices or download one FREE of charge from our website buttersjohnbee.com
- Read the catalogue carefully. Each of our properties carries a brief description. Read our details thoroughly and identify the properties you are interested in.
- Take a look at the property you are interested in. Contact the office listed for viewing arrangements or see the relevant viewing schedule.
- Take legal advice. Purchasing a property at auction is a firm commitment that carries the same legal implications as a signed contract by private treaty. In most cases we have copies of legal documents in our possession, or your solicitor may wish to contact the vendor's solicitor, these legal packs can often be downloaded from our website.
- Read the general conditions of sale at the rear of the catalogue.
- Get a copy of the addendum. These are available online and contain any late amendments, information or alterations.
- Plan ahead if you require mortgage assistance. Note that prospective purchasers should have the necessary mortgage advice well in advance of future auctions.
- Leave time to get a valuation done if required. Your mortgage finance may be reliant upon the results, not to mention your peace of mind.
- Organise your deposit before the auction. We ask for 10% deposit (subject to a minimum of £1000) once the property is knocked down to you, payable on signing contracts on the day of the auction. Your bank or building society should be made aware of this. The balance of the monies will normally be due within 20 working days of the sale. In addition you have to pay to the auctioneer an administration fee of £800 plus VAT if you purchase at the auction, prior to the auction or post auction. Cheques made payable to butters john bee. Deposits must be paid by bankers draft, personal/business cheque or debit card.
- Make sure the Auctioneer has your bid, by clearly indicating with catalogue or hand.
- Ensure that you have registered with us before the auction starts, and supplied your two forms of identification. You can do this on the night of the auction, just arrive a bit early to give yourself enough time, or you can go into any of our 17 High Street branches prior to the sale and they will certify you ID free of charge. Original documents MUST be provided, photocopies are NOT acceptable. We will also accept certified ID sent direct from a solicitor or professional body.

- Check that the properties included in the catalogue will be offered on the day of the sale. Some may be withdrawn, and some may be sold prior to auction.
- Keep calm. Our Auctioneers understand the pressure that first time auction buyers can experience in the sale room, and will be as helpful as possible.
- Arrive in plenty of time. It is useful to get some knowledge of how sales are conducted by seeing other lots being sold.
- If the lot you're bidding for fails to make its reserve it may be that the vendor will decide to accept your bid later so make sure you leave your details with us.
- Be ready to sign immediately when the hammer falls. We shall have a copy of the contract available soon after the hammer falls.
- Be positive, with the right forward planning and research you will find an auction a speedy and simple way of buying a property.
- This catalogue contains details about properties being sold at auction. Those details are subject to change up to and including the day of the auction. Please check our website regularly at buttersjohnbee.com and look out for any additional materials available on the day of the auction, in order to stay fully informed with the up to date information.
- Guide Price:** An indication of the seller's current minimum acceptable price at auction. The guide price or range of guide prices is given to assist consumers in deciding whether or not to pursue a purchase. It is usual, but not always the case, that a provisional reserve range is agreed between the seller and the auctioneer at the start of marketing. As the reserve is not fixed at this stage and can be adjusted by the seller at any time up to the day of the auction in the light of interest shown during the marketing period, a guide price is issued. This guide price can be shown in the form of a minimum and maximum price range within which an acceptable sale price (reserve) would fall, or as a single price figure within 10% of which the minimum acceptable price (reserve) would fall. A guide price is different to a reserve price (see separate definition). Both the guide price and the reserve price can be subject to change up to and including the day of the auction.
- Reserve Price:** the seller's minimum acceptable price at auction and the figure below which the auctioneer cannot sell. The reserve price is not disclosed and remains confidential between the seller and the auctioneer. Both the guide price and the reserve price can be subject to change up to and including the day of the auction.

Join the **bjb** hive with our **FREE Lettings Switch Service**

Call Andy Townsend on **01782 211144**
or e-mail andytownsend@bjbmail.com
to find out more.



Order of sale

(unless previously sold or withdrawn, please check the Addendum online for updates)

**The Double Tree by Hilton Hotel, Festival Park,
Stoke-on-Trent, Staffordshire, ST1 5BQ**

Monday 21st November 2022 at 6.30pm



- 1 22, Flash Lane, Trent Vale, Newcastle-under-Lyme, Staffordshire, ST4 5QZ
- 2 34, Burnham Street, Fenton, Stoke-on-Trent, Staffordshire, ST4 3EX
- 3 45, Burnham Street, Fenton, Stoke-on-Trent, Staffordshire, ST4 3EY
- 4 44, Maddock Street, Stoke-on-Trent, Staffordshire, ST6 3PW
- 5 10, Bridge Road, Trent Vale, Newcastle-under-Lyme, Staffordshire, ST4 6LP
- 6 Room 25/Unit 21, Q Studios, North Street, Stoke, Stoke-on-Trent, Staffordshire, ST4 7FA
- 7 Room 26/Unit 22, Q Studios, North Street, Stoke, Stoke-on-Trent, Staffordshire, ST4 7FA
- 8 39, Crossway, Crewe, Cheshire, CW1 4JW
- 9 Glenside, Newcastle Road, Madeley Heath, Crewe, Cheshire, CW3 9JU
- 10 35, Sloane Way, Fenpark, Stoke-on-Trent, Staffordshire, ST4 3QZ
- 11 30, Knype Way, Bradwell, Newcastle-under-Lyme, Staffordshire, ST5 8JL
- 12 613, Lightwood Road, Longton, Stoke-on-Trent, Staffordshire, ST3 7HQ
- 13 Flat 4, The White Lion, Ashbourne Road, Leek, Staffordshire, ST13 5AS
- 14 137, Oldfield Street, Fenton, Stoke-on-Trent, Staffordshire, ST4 3PG
- 15 195, Oldfield Street, Fenton, Stoke-on-Trent, Staffordshire, ST4 3PG
- 16 66, Meadow Lane, Milehouse, Newcastle-under-Lyme, Staffordshire, ST5 9AJ
- 17 Shalom, Vicarage Lane, Stafford, Bednall, Stafford, Staffordshire, ST17 0SE
- 18 50, Eastgate Road, Holmes Chapel, Crewe Cheshire, CW4 7BW
- 19 74, Gordon Street, Burslem, Stoke-on-Trent, Staffordshire, ST6 1HY
- 20 25, Moorland Heights, Biddulph, Stoke-on-Trent, Staffordshire, ST8 6TN
- 21 56, Newford Crescent, Milton, Stoke-on-Trent, Staffordshire, ST2 7EQ
- 22 325, Leek New Road, Sneyd Green, Stoke-on-Trent, Staffordshire, ST6 2NB
- 23 Spring Cottage, Miles Green Road, Bignall End, Stoke-on-Trent, Staffordshire, ST7 8LQ
- 24 250, King Street, Fenton, Stoke-on-Trent, Staffordshire, ST4 3EN
- 25 8, Woodside Drive, Meir Heath, Stoke-on-Trent, Staffordshire, ST3 7JW
- 26 111, Stewart Street, Crewe, Cheshire, CW2 8LX
- 27 8, Spring Gardens, Nantwich, Cheshire, CW5 5SH
- 28 16, Stuart Gardens, Norwich, Norfolk, NR1 1JG
- 29 8, Chase Road, Burntwood, Staffordshire, WS7 0DP
- 30 33, Market Street & 1-7 Chester Street, Crewe, Cheshire, CW1 2LB
- 31 2, 3, 4 & 5, De Brompton Villas, Newcastle-under-Lyme, Staffordshire, ST5 2BD
- 32 63a, Newfield Street, Tunstall, Stoke-on-Trent, Staffordshire, ST6 5HD
- 33 The Wheatsheaf, Kimblestone Road, Oulton, Stone, Staffordshire, ST15 8UW
- 34 Freehold Apartment Block, Heathfield Avenue/Hightown, Crewe, Cheshire, CW1 3BA
- 35 Plot 1 Land at, School Lane, Wrexham, North Wales, LL11 6SH
- 36 Plot 2 Land at, School Lane, Wrexham, North Wales, LL11 6SH

- 37 Plot 3 Land at, School Lane, Wrexham, North Wales, LL11 6SH
- 38 Land at, Commercial Road, Hanley, Stoke-on-Trent, Staffordshire, ST1 3QS
- 39 Land at, Jasmine Crescent, Newchapel, Stoke-on-Trent, Staffordshire, ST7 4GZ
- 40 Land at, Sprink Bank Road, Chell, Stoke-on-Trent, Staffordshire, ST6 6HZ
- 41 Land at, Tunbridge Drive, Silverdale, Newcastle-under-Lyme, Staffordshire, ST5 6QU
- 42 Land at, Chapel Close, Mow Cop, Stoke-on-Trent, Staffordshire, ST7 4NU
- 43 Land at, Willfield Lane, Stockton Brook, Stoke-on-Trent, Staffordshire, ST9 9NR
- 44 House & Outbuildings at, Red Hall Farm, Dales Green, Stoke-on-Trent, ST7 4RH
- 45 102, The Boulevard, Tunstall, Stoke-on-Trent, Staffordshire, ST6 6DW
- 46 19, Marlingford Way, Easton, Norwich, NR9 5HA
- 47 1, Leyshon Street, Graig, Pontypridd, South Wales, CF37 1ND
- 48 11, Nelson Street, Leek, Staffordshire, ST13 6BB
- 49 10, Willow Road, Stone, Staffordshire, ST15 8NP
- 50 8, Emberton Street, Wolstanton, Newcastle-under-Lyme, Staffordshire, ST5 0BZ
- 51 4, Ravens Lane, Bignall End, Stoke-on-Trent, Staffordshire, ST7 8PS
- 52 316, Werrington Road, Bucknall, Stoke-on-Trent, Staffordshire, ST2 9AU
- 53 1, Rope Lane, Crewe, Cheshire, CW2 6RB
- 54 117, St Marys Road, Longton, Stoke-on-Trent, Staffordshire, ST3 5DW
- 55 43, Vivian Road, Fenton, Stoke-on-Trent, Staffordshire, ST4 3JG
- 56 2, Audmore Road, Gnosall, Stafford, Staffordshire, ST20 0HA
- 57 37, Robert Heath Street, Smallthorne, Stoke-on-Trent, Staffordshire, ST6 1LH
- 58 8, Wise Street, Dresden, Stoke-on-Trent, Staffordshire, ST3 4PQ
- 59 74, Heath Street, Chesterton, Newcastle-under-Lyme, Staffordshire, ST5 7ND
- 60 6, Fairview Avenue, Weston, Crewe, Cheshire, CW2 5LX
- 61 61, Merrick Street, Hanley, Stoke-on-Trent, Staffordshire, ST1 2LN
- 62 6, Chatterley Road, Tunstall, Stoke-on-Trent, Staffordshire, ST6 5JF
- 63 39, Machin Crescent, Bradwell, Newcastle-under-Lyme, Staffordshire, ST5 8NL
- 64 15, Albion Street, Crewe, Cheshire, CW2 8NB
- 65 12, Meaford Avenue, Stone, Staffordshire, ST15 8LT
- 66 47, Orme Road, Pool Dam, Newcastle-under-Lyme, Staffordshire, ST5 2ND
- 66 57, Bemersley Road, Ball Green, Stoke-on-Trent, Staffordshire, ST6 8JF

Is your property suitable for sale by auction?

Email auction@bjbmail.com to organise a
FREE and honest appraisal of your property.



Order of sale (in alphabetical order)

(unless previously sold or withdrawn, please check the Addendum online for updates)

**The Double Tree by Hilton Hotel, Festival Park,
Stoke-on-Trent, Staffordshire, ST1 5BQ**

Monday 21st November 2022 at 6.30pm



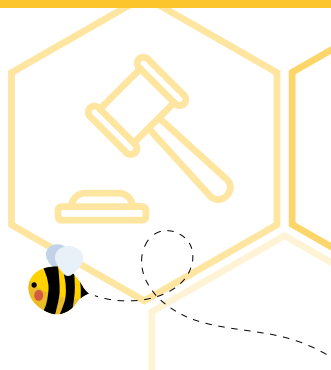
- 64 15, Albion Street, Crewe, Cheshire, CW2 8NB
- 13 Flat 4, The White Lion, Ashbourne Road, Leek, Staffordshire, ST13 5AS
- 56 2, Audmore Road, Gnosall, Stafford, Staffordshire, ST20 0HA
- 66 57, Bemersley Road, Ball Green, Stoke-on-Trent, Staffordshire, ST6 8JF
- 5 10, Bridge Road, Trent Vale, Newcastle-under-Lyme, Staffordshire, ST4 6LP
- 2 34, Burnham Street, Fenton, Stoke-on-Trent, Staffordshire, ST4 3EX
- 3 45, Burnham Street, Fenton, Stoke-on-Trent, Staffordshire, ST4 3EY
- 42 Land at, Chapel Close, Mow Cop, Stoke-on-Trent, Staffordshire, ST7 4NU
- 29 8, Chase Road, Burntwood, Staffordshire, WS7 0DP
- 62 6, Chatterley Road, Tunstall, Stoke-on-Trent, Staffordshire, ST6 5JF
- 38 Land at, Commercial Road, Hanley, Stoke-on-Trent, Staffordshire, ST1 3QS
- 8 39, Crossway, Crewe, Cheshire, CW1 4JW
- 31 2, 3, 4 & 5, De Brompton Villas, Newcastle-under-Lyme, Staffordshire, ST5 2BD
- 18 50, Eastgate Road, Holmes Chapel, Crewe Cheshire, CW4 7BW
- 50 8, Emberton Street, Wolstanton, Newcastle-under-Lyme, Staffordshire, ST5 0BZ
- 60 6, Fairview Avenue, Weston, Crewe, Cheshire, CW2 5LX
- 1 22, Flash Lane, Trent Vale, Newcastle-under-Lyme, Staffordshire, ST4 5QZ
- 19 74, Gordon Street, Burslem, Stoke-on-Trent, Staffordshire, ST6 1HY
- 59 74, Heath Street, Chesterton, Newcastle-under-Lyme, Staffordshire, ST5 7ND
- 34 Freehold Apartment Block, Heathfield Avenue/Hightown, Crewe, Cheshire, CW1 3BA
- 39 Land at, Jasmine Crescent, Newchapel, Stoke-on-Trent, Staffordshire, ST7 4GZ
- 33 The Wheatsheaf, Kimblestone Road, Oulton, Stone, Staffordshire, ST15 8UW
- 24 250, King Street, Fenton, Stoke-on-Trent, Staffordshire, ST4 3EN
- 11 30, Knype Way, Bradwell, Newcastle-under-Lyme, Staffordshire, ST5 8JL
- 22 325, Leek New Road, Sneyd Green, Stoke-on-Trent, Staffordshire, ST6 2NB
- 47 1, Leyshon Street, Graig, Pontypridd, South Wales, CF37 1ND
- 12 613, Lightwood Road, Longton, Stoke-on-Trent, Staffordshire, ST3 7HQ
- 63 39, Machin Crescent, Bradwell, Newcastle-under-Lyme, Staffordshire, ST5 8NL
- 4 44, Maddock Street, Stoke-on-Trent, Staffordshire, ST6 3PW
- 30 33, Market Street & 1-7 Chester Street, Crewe, Cheshire, CW1 2LB
- 46 19, Marlingford Way, Easton, Norwich, NR9 5HA
- 16 66, Meadow Lane, Milehouse, Newcastle-under-Lyme, Staffordshire, ST5 9AJ
- 65 12, Meaford Avenue, Stone, Staffordshire, ST15 8LT
- 61 61, Merrick Street, Hanley, Stoke-on-Trent, Staffordshire, ST1 2LN
- 23 Spring Cottage, Miles Green Road, Bignall End, Stoke-on-Trent, Staffordshire, ST7 8LQ

- 20 25, Moorland Heights, Biddulph, Stoke-on-Trent, Staffordshire, ST8 6TN
- 48 11, Nelson Street, Leek, Staffordshire, ST13 6BB
- 9 Glenside, Newcastle Road, Madeley Heath, Crewe, Cheshire, CW3 9JU
- 32 63a, Newfield Street, Tunstall, Stoke-on-Trent, Staffordshire, ST6 5HD
- 21 56, Newford Crescent, Milton, Stoke-on-Trent, Staffordshire, ST2 7EQ
- 6 Room 25/Unit 21, Q Studios, North Street, Stoke, Stoke-on-Trent, Staffordshire, ST4 7FA
- 7 Room 26/Unit 22, Q Studios, North Street, Stoke, Stoke-on-Trent, Staffordshire, ST4 7FA
- 14 137, Oldfield Street, Fenton, Stoke-on-Trent, Staffordshire, ST4 3PG
- 15 195, Oldfield Street, Fenton, Stoke-on-Trent, Staffordshire, ST4 3PG
- 66 47, Orme Road, Pool Dam, Newcastle-under-Lyme, Staffordshire, ST5 2ND
- 51 4, Ravens Lane, Bignall End, Stoke-on-Trent, Staffordshire, ST7 8PS
- 44 House & Outbuildings at, Red Hall Farm, Dales Green, Stoke-on-Trent, ST7 4RH
- 57 37, Robert Heath Street, Smallthorne, Stoke-on-Trent, Staffordshire, ST6 1LH
- 53 1, Rope Lane, Crewe, Cheshire, CW2 6RB
- 35 Plot 1 Land at, School Lane, Wrexham, North Wales, LL11 6SH
- 36 Plot 2 Land at, School Lane, Wrexham, North Wales, LL11 6SH
- 37 Plot 3 Land at, School Lane, Wrexham, North Wales, LL11 6SH
- 10 35, Sloane Way, Fenpark, Stoke-on-Trent, Staffordshire, ST4 3QZ
- 27 8, Spring Gardens, Nantwich, Cheshire, CW5 5SH
- 40 Land at, Sprink Bank Road, Chell, Stoke-on-Trent, Staffordshire, ST6 6HZ
- 54 117, St Marys Road, Longton, Stoke-on-Trent, Staffordshire, ST3 5DW
- 26 111, Stewart Street, Crewe, Cheshire, CW2 8LX
- 28 16, Stuart Gardens, Norwich, Norfolk, NR1 1JG
- 45 102, The Boulevard, Tunstall, Stoke-on-Trent, Staffordshire, ST6 6DW
- 41 Land at, Tunbridge Drive, Silverdale, Newcastle-under-Lyme, Staffordshire, ST5 6QU
- 17 Shalom, Vicarage Lane, Stafford, Bednall, Stafford, Staffordshire, ST17 0SE
- 55 43, Vivian Road, Fenton, Stoke-on-Trent, Staffordshire, ST4 3JG
- 52 316, Werrington Road, Bucknall, Stoke-on-Trent, Staffordshire, ST2 9AU
- 43 Land at, Willfield Lane, Stockton Brook, Stoke-on-Trent, Staffordshire, ST9 9NR
- 49 10, Willow Road, Stone, Staffordshire, ST15 8NP
- 58 8, Wise Street, Dresden, Stoke-on-Trent, Staffordshire, ST3 4PQ
- 25 8, Woodside Drive, Meir Heath, Stoke-on-Trent, Staffordshire, ST3 7JW

Landlords.

**Get tenants buzzing
into your properties.**

**Call Andy Townsend on 01782 211144
or e-mail andytownsend@bjbmail.com
to find out more.**



Market Review



As the dust has settled post-lockdown, this year has still had its fair amount of hurdles to overcome. With 2023 fast approaching, some of our industry experts share a few words with us...



**Auction Manager –
John Hand**

“Sales have been consistently strong throughout 2022, we have

certainly turned a corner and confidence is growing as more and more people venturing back to join us in the room, we are also seeing record levels of internet bidders nationwide. Across the business stock has been scant, but we are gradually getting the Lot numbers back up to pre-lockdown levels, and hope to keep growing in the New Year.”



**Estate Agency Director –
Kerry Davies**

“The local housing market in Staffordshire and Cheshire remains strong and buoyant. Overall the market has been

very resilient to the changing and unstable economy in recent years, where economists predicted falls there have been rises. Demand continues to outweigh supply, and we see more than 50% of our properties being sold to people from outside the area. This is due to the great transport links and reasonably priced properties compared to other areas of the UK.”



**Lettings Area Director –
Andy Townsend**

“The lettings market has gone from strength to strength throughout 2022 and the outlook for next year

looks to remain the same. With average rents in the area increasing and demand outstripping supply, there is no better time to think about either growing your portfolio or starting to think about setting one up.”

**Just Mortgages –
Dan McCumesky**

“We have heard a lot of talk in the media of late. Lenders are not lending, they are pulling out of deals, withdrawing offers and they have raised interest rates significantly. Some of this is true, some is false and some of it is misinterpreted. What we do know is that rates have been historically low over the last few years. If the market starts to settle over the coming months, it is possible that the rates that we are currently seeing become the new normal. The mortgage market remains strong and lenders still have a strong appetite to lend. If you are considering your mortgage options, there has never been a better time to seek professional advice.”



Bid live online!

All our sales are broadcast live in conjunction with Essential Information Group.

What does the service cost?

Nothing! It's free, you pay the same as any buyer who attends the auction.

Can I just watch?

Yes, many people use the service just to watch the auction.

Why do you need to know my maximum bid?

We set a maximum bid in order to process a suitable deposit, but you conduct the bidding and setting a cap does not mean you have to bid to it. You may set a cap of £100,000 but stop bidding at £88,000 – you are in complete control.

Can I bid on more than one property?

Yes. You can buy as many as you can process deposit payments for. You need to let us know which lots you are bidding on so our auctioneer can keep a look out for your bids.

How does the auctioneer know I'm bidding?

The auctioneer has a monitor next to the rostrum that shows him your bid, and he can talk to you via the camera. Don't worry, you can see him but he can't see you!

Email auction@bjbmail.com for your registration form.

essential
information group



Proof of identity and address

A buyer's administration fee of £800 plus VAT is applicable to all lots sold at, pre or post auction.

All potential bidders will need to register prior to the auction, and provide proof of identity and address to enable you to bid at our sales. (See 'Proof of Identity' at front of the catalogue).

If the buyer's details are different from the successful bidder's, then the buyer will also be required to submit their details as above. If the successful bidder

is buying on behalf of a company we also require a letter from that company on their letterhead authorising the bidder to bid on their behalf, the bidder will still be required to produce their details as above.

Every buyer will be photographed at the auction before the contract is signed.

LOT
01

**22 Flash Lane, Trent Vale,
Newcastle-under-Lyme,
Staffordshire, ST4 5QZ**



Scan or Click

***Guide price £69,000 plus**



- End-terrace house
- Two double bedrooms
- First floor bathroom
- In need of modernization
- Close to Hospital complex
- EPC – D



Legal Representative

Sharon Plane

Goddard Dunbar

T 01782 284320

E info@goddarddunbar.co.uk

To apply contact:

Newcastle

T 01782 622155

E newcastle@bjbmail.com



LOT
02

**34 Burnham Street, Fenton,
Stoke-on-Trent, Staffordshire,
ST4 3EX**

*Guide price **£41,000 plus**



- Mid-terrace house
- Not inspected by auctioneers
- Currently tenanted
- Freehold
- EPC – TBC

Legal Representative

Glynn Buckley

Leadbeater & Kay

T 01782 201933

E Glynn@leadbeaterkay.co.uk

To apply contact:

Longton

T 01782 594777

E longton@bjbmail.com

LOT
03

**45 Burnham Street, Fenton,
Stoke-on-Trent, Staffordshire,
ST4 3EY**

***Guide price £41,000 plus**



- Mid-terrace house
- Not inspected by auctioneers
- Currently tenanted
- Freehold
- EPC – TBC

Legal Representative

Glynn Buckley

Leadbeater & Kay

T 01782 201933

E Glynn@leadbeaterkay.co.uk

To apply contact:

Longton

T 01782 594777

E longton@bjbmail.com

LOT
04

44 Maddock Street, Stoke-on-Trent, Staffordshire, ST6 3PW



Scan or Click

***Guide price £44,000 plus**



- Mid-terrace house
- Not inspected by auctioneers
- Mortgagee not in possession
- EPC – F

Legal Representative

Karen Lymn

Equivo

T 0343 290 0151

E Sales.Client@Equivo.com

To apply contact:

Hanley

T 01782 594777

E hanley@bjbmail.com

LOT
05

**10 Bridge Road, Trent Vale,
Newcastle-under-Lyme,
Staffordshire, ST4 6LP**



Scan or Click

***Guide price £94,500 plus**



- End town-house
- Two bedrooms
- In need of modernization
- Close to Hospital complex
- EPC – D



Legal Representative

Alan Duckworth

Wilkin Chapman Conveyancing

T 01472 262626

E Alan.duckworth@wilkinchapman.co.uk

To apply contact:

Newcastle

T 01782 622155

E newcastle@bjbmail.com



LOT
06

**Room 25/Unit 21, Q Studios,
North Street, Stoke, Stoke-on-
Trent, Staffordshire, ST4 7FA**



Scan or Click

***Guide price £40,000 plus**



- Student Accommodation building
- Self-contained pod with kitchenette/shower room
- Currently Let until end of term 2023
- Currently let at £125 p/w over a 46 week contract
- Ground rent £750 p/a
- Service charges £1321.72 p/a
- EPC – B



Legal Representative

Kerry Dundas

Dundas Law

T 01782 528338

E kerry@dundaslaw.co.uk

To apply contact:

Hanley

T 01782 202 600

E hanley@bjbmail.com

For illustration purposes only. Dimensions, fixtures, fittings and furnishings do not represent the current state of the property. Measurements are approximate. Not to scale.
Made with Measure 3-2022

LOT
07

**Room 26/Unit 22, Q Studios,
North Street, Stoke, Stoke-on-
Trent, Staffordshire, ST4 7FA**



Scan or Click

***Guide price £40,000 plus**



- Student Accommodation building
- Self-contained pod with kitchenette/ shower room
- Currently Let until end of term 2023
- Currently let at £125 p/w over a 46 week contract
- Ground rent £750 p/a
- Service charges £1321.72 p/a
- EPC – B



Legal Representative

Kerry Dundas

Dundas Law

T 01782 528338

E kerry@dundaslaw.co.uk

To apply contact:

Hanley

T 01782 202 600

E hanley@bjbmail.com

This illustration represents only. Dimensions, fixtures, fittings and furnishings do not represent the current state of the property. Measurements are approximate. Not to scale.
Made with SketchUp © 2023

We offer a whole range of no obligation advice. **Book your appointment now.**

Just mortgage and protection advice

- ✓ First Time Buyers
- ✓ House Purchases
- ✓ Remortgage
- ✓ Capital Raising
- ✓ Self Employed
- ✓ Let To Buy*
- ✓ Help to Buy
- ✓ Shared Ownership
- ✓ Self Build mortgages
- ✓ Debt Consolidation
- ✓ Buy To Let*
- ✓ Life Insurance
- ✓ Critical Illness Cover
- ✓ Income Protection
- ✓ Buildings & Contents Insurance
- ✓ Accident & Sickness Cover

THINK CAREFULLY BEFORE SECURING OTHER DEBTS
AGAINST YOUR HOME/PROPERTY. YOUR HOME/
PROPERTY MAY BE REPOSSESSED IF YOU DO NOT KEEP
UP REPAYMENTS ON YOUR MORTGAGE

**Just
Mortgages**



Backed by
HM Government

*Some buy to let and let to buy mortgages are not regulated by the Financial Conduct Authority.



LOT
08

**39 Crossway, Crewe, Cheshire,
CW1 4JW**



Scan or Click

***Guide price £90,000 plus**



- End-mews terrace
- Three bedrooms
- First floor bathroom
- Ground floor WC
- Good sized rear garden
- EPC – D



Legal Representative

James Williams

Poole Alcock Solicitors

T 01270 653181

E james.williams@poolealcock.co.uk

To apply contact:

Crewe

T 01270 213541

E Crewe@bjbmail.com



LOT
09

**Glenside, Newcastle Road,
Madeley Heath, Crewe,
Cheshire, CW3 9JU**



Scan or Click

***Guide price £240,000 plus**



- Detached bungalow
- Three bedrooms
- In need of modernisation
- Multiple outbuildings
- Large plot (approx. 1.5 Acres)
- Village location
- EPC – E



Legal Representative

Alana Morey

McQuades

T 01782 810875

E alana@mcquades.info

To apply contact:

Newcastle

T 01782 622155

E newcastle@bjbmail.com



LOT
10

**35 Sloane Way, Fenpark,
Stoke-on-Trent, Staffordshire,
ST4 3QZ**



Scan or Click

***Guide price £42,000 plus**



- Ground floor flat
- One bedroom
- Wet room
- Front garden
- Off road parking
- EPC – E



Legal Representative

Kerry Dundas

Dundas Law

T 01782 528338

E kerry@dundaslaw.co.uk

To apply contact:

Longton

T 01782 594777

E longton@bjbmail.com



LOT
11

**30 Knype Way, Bradwell,
Newcastle-under-Lyme,
Staffordshire, ST5 8JL**



Scan or Click

***Guide price £65,000 plus**



- **Semi-detached House**
- **Three bedrooms**
- **Two reception rooms**
- **Gas central Heating**
- **Double glazing**
- **In need of modernisation**
- **EPC – E**

The seller is a registered social landlord and is therefore prohibited from selling a property to anyone who is an employee or director of the seller, or was in the last 12 months an employee or director, or is a close relative of such a person or an agent on their behalf.

It is our understanding that this property is considered to be of a non-traditional construction and we therefore suggest that interested parties make enquiries of mortgage lenders as to whether the property is considered suitable for mortgage purposes.

Legal Representative

Meera Singadia

Anthony Collins Solicitors

T 0121 200 3242

E Meera.singadia@anthonicollins.com

To apply contact:

Newcastle

T 01782 622155

E newcastle@bjbmail.com

LOT
12

**613 Lightwood Road, Longton,
Stoke-on-Trent, Staffordshire,
ST3 7HQ**



Scan or Click

***Guide price £170,000 plus**



- Semi-detached house
- Three bedrooms
- In need of modernisation
- Sizeable gardens
- Off road parking
- EPC – D



Legal Representative

Kerry Dundas

Dundas Law

T 01782 528338

E kerry@dundaslaw.co.uk

It is our understanding that the above property may have suffered structural movement, therefore it is suggested that potential purchasers carry out their own structural investigations prior to bidding.

To apply contact:

Longton

T 01782 594777

E longton@bjbmail.com

LOT
13

**Flat 4, The White Lion,
Ashbourne Road, Leek,
Staffordshire, ST13 5AS**



Scan or Click

***Guide price £67,500 plus**



- Second floor apartment
- One bedroom
- Open plan kitchen-lounge
- Town centre location
- Off road parking
- EPC - TBC



Legal Representative

Beeston Shenton

Gemma Boulton

T 01782 662424

E gemma.boulton@beestonshenton.co.uk

To apply contact:

Denise White Estate Agents

T 01538 381772

E Denisewhite@denise-white.co.uk



LOT
14

**137 Oldfield Street, Fenton,
Stoke-on-Trent, Staffordshire,
ST4 3PG**

***Guide price £41,000 plus**



- Mid-terrace house
- Not inspected by auctioneers
- Currently tenanted
- Freehold
- EPC – TBC

Legal Representative

Glynn Buckley

Leadbeater & Kay

T 01782 201933

E Glynn@leadbeaterkay.co.uk

To apply contact:

Longton

T 01782 594777

E longton@bjbmail.com



Follow us on Facebook

@buttersjohnbeeauctions
and stay ahead of
the game.

Keep up to date with news
and events, up and coming
instructions, results and
updates on past lots.

butters john bee^{bjb}

facebook®

LOT
15

**195 Oldfield Street, Fenton,
Stoke-on-Trent, Staffordshire,
ST4 3PG**

***Guide price £41,000 plus**



- Mid-terrace house
- Not inspected by auctioneers
- Currently tenanted
- Freehold
- EPC – TBC

Legal Representative

Glynn Buckley

Leadbeater & Kay

T 01782 201933

E Glynn@leadbeaterkay.co.uk

To apply contact:

Longton

T 01782 594777

E longton@bjbmail.com

LOT
16

**66 Meadow Lane, Milehouse,
Newcastle-under-Lyme,
Staffordshire, ST5 9AJ**



Scan or Click

***Guide price £64,000 plus**



- **Detached bungalow**
- **Two bedrooms**
- **Gas central Heating**
- **Double glazing**
- **In need of modernization**
- **Good sized garden**
- **EPC – D**

The seller is a registered social landlord and is therefore prohibited from selling a property to anyone who is an employee or director of the seller, or was in the last 12 months an employee or director, or is a close relative of such a person or an agent on their behalf.

It is our understanding that this property is considered to be of a non-traditional construction and we therefore suggest that interested parties make enquiries of mortgage lenders as to whether the property is considered suitable for mortgage purposes.

Legal Representative

Meera Singadia

Anthony Collins Solicitors

T 0121 200 3242

E Meera.singadia@anthonicollins.com

To apply contact:

Newcastle

T 01782 622155

E newcastle@bjbmail.com

LOT
17

**Shalom, Vicarage Lane,
Bednall, Stafford,
Staffordshire, ST17 0SE**



Scan or Click

***Guide price £180,000 plus**



- Detached bungalow
- Two bedrooms
- In need of renovation and repair
- Garage to the rear
- Off road parking
- EPC – D



Legal Representative

Victoria Follows

Hand Morgan and Owen Solicitors

T 01785 211411

E E: Vfollows@hmo.co.uk

To apply contact:

Stafford

T 01785 246000

E Stafford@bjbmail.com



LOT
18

**50 Eastgate Road, Holmes
Chapel, Crewe Cheshire,
CW4 7BW**



Scan or Click

***Guide price £190,000 plus**



- Semi-detached bungalow
- Two bedrooms
- In need of modernization
- Garden front & rear
- EPC – C



Legal Representative

B J McKenna & Co Solicitors

T 0161 4325757

E

To apply contact:

Sandbach

T 01270 768919

E sandbach@bjbmail.com



LOT
19

**74 Gordon Street, Burslem,
Stoke-on-Trent, Staffordshire,
ST6 1HY**



Scan or Click

***Guide price £82,000 plus**



- Large End Terrace
- Three double bedrooms
- Two reception rooms
- First floor bathroom
- Currently let at £6,600 p/a
- Rear yard
- EPC - E



Legal Representative

Steve Vasey

Walters and Plaskitt

T **01782 830038**

E **steve@wpsolicitors.co.uk**

To apply contact:

Hanley

T **01782 202600**

E **hanley@bjbmail.com**



For all your
commercial
property
needs



bjb Commercial
do it again!

**7 Years Most
Active Agent in
Staffordshire.**

Paul Jeffries BSc Hons (MRICS)
Associate Director



To speak to a member of our
professional commercial property
team, telephone **01782 212201** or
email **commercial@bjbmail.com**

butters john bee ^{bjb}



LOT
20

**25 Moorland Heights,
Biddulph, Stoke-on-Trent,
Staffordshire, ST8 6TN**



Scan or Click

***Guide price £82,000 plus**



- First floor apartment
- Two bedrooms
- Open plan kitchen, lounge area
- Bathroom
- Well-presented interior
- Allocated parking space
- Secure communal garden
- EPC – B



Legal Representative

Rebekah Jenkins

ADK Law Solicitors

T 01204 565444

E rebekah.jenkins@adklaw.co.uk

To apply contact:

Denise White Estate Agents

T 01538 381772

E Denisewhite@denise-white.co.uk



LOT
21

**56 Newford Crescent, Milton,
Stoke-on-Trent, Staffordshire,
ST2 7EQ**



Scan or Click

***Guide price £68,000 plus**



- First floor flat
- Two bedrooms
- Currently tenanted @ £5,100 p/a
- Leasehold
- Garden and Parking
- EPC - C



Legal Representative

Kerry Dundas

Dundas Law

T 01782 528338

E kerry@dundaslaw.co.uk

To apply contact:

Hanley

T 01782 202600

E hanley@bjbmail.com



LOT
22

**325 Leek New Road, Sneyd
Green, Stoke-on-Trent,
Staffordshire, ST6 2NB**



Scan or Click

***Guide price £128,000 plus**



- Semi-detached family home
- Three double bedrooms
- Kitchen and Utility
- Modern shower room
- Parkland to the rear
- Potential yield approx. £9,540 p/a
- EPC - C



Legal Representative

Emma Williams

Clowes & Co Solicitors

T 01782 444204

E emma@clowessolicitors.co.uk

It is our understanding that there is a mine shaft within close proximity of the boundary of the property

To apply contact:

Hanley

T 01782 202600

E hanley@bjbmail.com

butters^{bjb}
john bee



The region's number 1 property auctioneer*

With 9 auctions in 2023 it's
the fastest way to sell your
property.

For a free appraisal of your
property call **0800 090 2200**
or email **auction@bjbmail.com**

butters^{bjb} **john bee**

* Source: EI Group

LOT
23

**Spring Cottage Miles Green
Road, Bignall End, Stoke-on-
Trent, Staffordshire, ST7 8LQ**



Scan or Click

***Guide price £145,000 plus**



- Semi-detached cottage
- Two bedrooms
- In need of modernisation
- Driveway & Garden
- EPC – E



Legal Representative

Racheal Byles

Woolliscrofts

T 01782 406828

E rbytes@woolliscrofts.co.uk

To apply contact:

Alsager

T 01270 877778

E alsager@bjbmail.com



LOT
24

**250 King Street, Fenton,
Stoke-on-Trent, Staffordshire,
ST4 3EN**

***Guide price £41,000 plus**



- Mid-terrace house
- Not inspected by auctioneers
- Currently tenanted
- Freehold
- EPC – TBC

Legal Representative

Glynn Buckley

Leadbeater & Kay

T 01782 201933

E Glynn@leadbeaterkay.co.uk

To apply contact:

Longton

T 01782 594777

E longton@bjbmail.com

LOT
25

**8 Woodside Drive, Meir Heath,
Stoke-on-Trent, Staffordshire,
ST3 7JW**

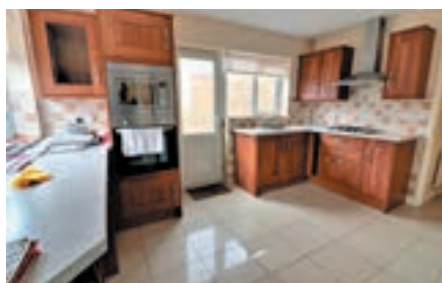


Scan or Click

***Guide price £198,000 plus**



- Detached bungalow
- Two bedrooms
- Sizeable gardens
- Off road parking
- EPC – D



Legal Representative

James Whitmore

Clyde Chappell & Botham

T 01782 599577

E Jameswhitmore@clydechappellandbotham.com

To apply contact:

Longton

T 01782 594777

E longton@bjbmail.com



We offer a whole range of no obligation advice. **Book your appointment now.**

Just mortgage and protection advice

- ✓ First Time Buyers
- ✓ House Purchases
- ✓ Remortgage
- ✓ Capital Raising
- ✓ Self Employed
- ✓ Let To Buy*
- ✓ Help to Buy
- ✓ Shared Ownership
- ✓ Self Build mortgages
- ✓ Debt Consolidation
- ✓ Buy To Let*
- ✓ Life Insurance
- ✓ Critical Illness Cover
- ✓ Income Protection
- ✓ Buildings & Contents Insurance
- ✓ Accident & Sickness Cover

THINK CAREFULLY BEFORE SECURING OTHER DEBTS
AGAINST YOUR HOME/PROPERTY. YOUR HOME/
PROPERTY MAY BE REPOSSESSED IF YOU DO NOT KEEP
UP REPAYMENTS ON YOUR MORTGAGE

**Just
Mortgages**



Backed by
HM Government

*Some buy to let and let to buy mortgages are not regulated by the Financial Conduct Authority.



LOT
26

**111 Stewart Street, Crewe,
Cheshire, CW2 8LX**



Scan or Click

***Guide price £270,000 plus**



- Prestigious property
- Three bedrooms
- Full of character, period features
- In need of sympathetic updating
- Conservatory & garden
- EPC - D



Legal Representative

Tracy Guest

Ward Gethin Archer

T 01362 852918

E tracy.guest@wga.co.uk

To apply contact:

Crewe

T 01270 213541

E crewe@bjbmail.com



LOT
27

**8 Spring Gardens, Nantwich,
Cheshire, CW5 5SH**



Scan or Click

***Guide price £125,000 plus**



- Traditional terraced house
- Two Bedrooms
- Double Glazing
- Central Heating
- Cul-De-Sac Location
- Convenient for Amenities
- EPC - D



Legal Representative

Martyn Measures

Hibberts

T 01270 624225

E mhm@hibberts.com

To apply contact:

Nantwich

T 01270 623444

E nantwich@bjbmail.com



LOT
28

**16 Stuart Gardens, Norwich,
Norfolk, NR1 1JG**



Scan or Click

*Guide price **£100,000 plus**



- Top floor flat
- One bedroom
- Currently tenanted at £9,900 p/a
- Allocated parking
- Popular residential area
- EPC - C



Legal Representative

Tracy Guest

Ward Gethin Archer

T 01362 852918

E tracy.guest@wga.co.uk

To apply contact:

haart Norwich

T 01603 761600

E Victoria.reek@haart.co.uk



LOT
29

**8 Chase Road, Burntwood,
Staffordshire, WS7 0DP**

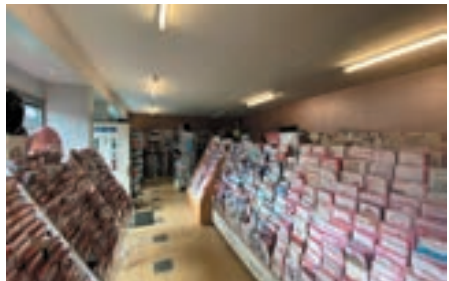


Scan or Click

***Guide price £135,000 plus**



- Mixed use investment
- Ground floor shop
- Self-contained 2 bed flat
- Total Floor Area: 1,538 Sq ft
- Current income £9,000 p/a
- Parking, garage to the rear
- EPC – D (79)



Legal Representative

Tracey Longespe

Longespe & Co

T 0161 236 9403

E diane@longespe-solicitors.com

To apply contact:

Commercial

T 01782 212201

E commercial@bjbmail.com



LOT
30

**33 Market Street & 1-7 Chester
Street, Crewe, Cheshire,
CW1 2LB**



Scan or Click

***Guide price £195,000 plus**



- 4 ground floor retail units
- First & second floor offices
- One retail unit let
- Would suit a variety of uses STPP
- Requires refurbishment & modernisation
- 2,736 sq ft (254.15 sq m)
- EPC - TBC



Legal Representative

Mr Rose Michael

Dwyers Solicitors

T 0161 308 3928

E solicitors@dwyers.net

To apply contact:

Commercial

T 01782 212201

E commercial@bjbmail.com



LOT
31

**2, 3, 4 & 5 De Brompton Villas,
Newcastle-under-Lyme,
Staffordshire, ST5 2BD**



Scan or Click

***Guide price £550,000 plus**



- Block of 4 x 3 bed houses
- All 4 tenanted
- Current income £41,580 p/a
- Popular area close to town centre
- EPC – C/C/C/C



Legal Representative

Sharon Plane

Goddard Dunbar

T 01782 284320

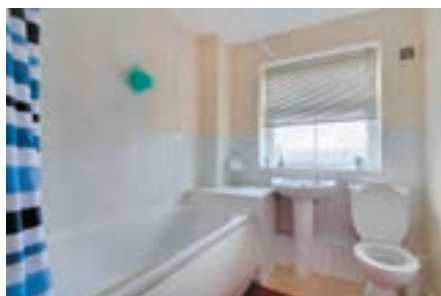
E info@goddarddunbar.co.uk

To apply contact:

Newcastle

T 01782 622155

E newcastle@bjbmail.com



LOT
32

**63a Newfield Street, Tunstall,
Stoke-on-Trent, Staffordshire,
ST6 5HD**



Scan or Click

***Guide price £60,000 plus**



- Two storey workshop
- Single phase electric
- Water supply
- Alarmed
- Rear yard
- EPC – G (154)



Legal Representative

Ms Catherine Griffiths

Charltons

T 01782 522111

E catherine@charltonssolicitors.co.uk

To apply contact:

Commercial

T 01782 212201

E commercial@bjbmail.com



LOT
33

**The Wheatsheaf, Kimblestone
Road, Oulton, Stone,
Staffordshire, ST15 8UW**



Scan or Click

***Guide price £350,000 plus**



- Detached Freehold Pub/Restaurant
- Extensive Restaurant/Seating area
- Separate Bar
- Fully equipped kitchen
- First floor conference/party suite
- Ready to trade with minimal input or capital outlay
- Outside seating and car park
- Freehold with vacant possession
- EPC - TBC



Legal Representative

Mr Richard Scholes

RJS Solicitors

T 01782 646320

E Richard@rjssolicitors.com

To apply contact:

Commercial

T 01782 212201

E commercial@bjbmail.com/ paulbeardmore@bjbmail.com



Are you looking to get your Commercial property professionally managed?

We at butters john bee Commercial Property Management are able to assist with every property asset class, from single shops to business parks, and offer a tailored service that can be adapted to your exact requirements.

Here is what we offer;

- ✧ Rent collections
- ✧ Rent/expenditure statements
- ✧ Service charges
- ✧ Responsibility for repairs
- ✧ Rent reviews
- ✧ Lease renewals
- ✧ Schedules of condition
- ✧ Inspection reports
- ✧ Dilapidation reports
- ✧ Tenant compliance
- ✧ Re-letting of vacant space



If you wish to make an enquiry
please get in touch:

T 01782 211160

E katierushton@bjbmail.com



butters john bee^{bjb}

LOT
34

Freehold Apartment Block, Heathfield Avenue/Hightown, Crewe, Cheshire, CW1 3BA

*Guide price **£450,000 plus**



- 5 x New Build Apartments
- Investment potential
- Completion due Nov 2022
- Popular rental area
- 4 x 1 Bed @ £600 pcm
- 1 x 2 Bed @ £650 pcm
- Potential gross yield 8.13% p/a
- EPC – N/A



Legal Representative

Matthew Middleton

Middleton Law

T 01952 605577

E Matthew@middleton.co.uk

To apply contact:

Land & New Homes

T 01782 211147

E paulbeardmore@bjbmail.com / CarlosHernandez@bjbmail.com

butters john bee ^{bjb}
land & new homes

LOT
35

**Plot 1 Land at School Lane,
Wrexham, North Wales,
LL11 6SH**



Scan or Click

***Guide price £200,000 plus**



- Residential Development Site
- Site Area: 0.30 Acre (0.12 ha)
- Planning for four 3 storey Town Houses
- Reference P/2013/0697
- Far reaching views
- EPC – N/A



Legal Representative

Matthew Middleton

Middleton Law

T 01952 605577

E Matthew@middleton.co.uk

To apply contact:

Land & New Homes

T 01782 211147

E paulbeardmore@bjbmail.com





LOT
36

Plot 2 Land at School Lane, Wrexham, North Wales, LL11 6SH



Scan or Click

*Guide price **£270,000 plus**



- Residential Development Site
- Site Area: 0.19 Acre (768 sq.m)
- 3 x Part-Built 3 Storey Town Houses
- Planning Reference P/2013/0697
- Far Reaching Views
- EPC – N/A



Legal Representative

Matthew Middleton

Middleton Law

T 01952 605577

E Matthew@middleton.co.uk

To apply contact:

Land & New Homes

T 01782 211147

E paulbeardmore@bjbmail.com





LOT
37

**Plot 3 Land at School Lane,
Wrexham, North Wales,
LL11 6SH**



Scan or Click

***Guide price £175,000 plus**



- Residential Development Site
- Site Area: 0.16 Acre (662 sq.m)
- 1 x Part-Built 3 Storey Detached House
- Planning Reference P/2013/0697
- Far Reaching Views
- EPC – N/A



Legal Representative

Matthew Middleton

Middleton Law

T 01952 605577

E Matthew@middleton.co.uk

To apply contact:

Land & New Homes

T 01782 211147

E paulbeardmore@bjbmail.com





LOT
38

**Land at Commercial Road,
Hanley, Stoke-on-Trent,
Staffordshire, ST1 3QS**



Scan or Click

***Guide price £460,000 plus**



- Residential Development Site
- Site Area: 1.89 Acre (0.76 ha)
- Part Cleared site
- No Current Planning Consent
- Canal Frontage
- EPC – N/A



Legal Representative

Kerry Roshier

Herrington Carmichael LLP

T 01276 854920

E Kerry.Roshier@herrington-carmichael.com

To apply contact:

Land & New Homes

T 01782 211147

E paulbeardmore@bjbmail.com





LOT
39

Land at Jasmine Crescent, Newchapel, Stoke-on-Trent, Staffordshire, ST7 4GZ



Scan or Click

*Guide price **£70,000 plus**



- Residential Development Site
- Site Area: 0.14 Acre (566 Sq m)
- Outline planning 1 x 4 bed house
- REF: 21/00617/OUT
- EPC – N/A



Legal Representative

William Murray Cantley

Woolliscrofts Solicitors

T 01782 204000

E mcantley@woolliscrofts.co.uk

To apply contact:

Land & New Homes

T 01782 211147

E residential-land@bjbmail.com





First Floor Plan



Ground Floor Plan

Proposed Floor Plans - 1:100



Proposed Block / Roof Plan - 1:100



Side Elevation - 1:100



Typical Section - 1:100

LOT
40

Land at Sprink Bank Road, Chell, Stoke-on-Trent, Staffordshire, ST6 6HZ



Scan or Click

*Guide price **£200,000 plus**



- Residential Development Site
- Site Area: 0.49 Acre (1,982 Sq m)
- Planning REF: 65952/FUL
- Four x 4 bed semi-detached houses
- EPC – N/A



Legal Representative

Jonathan Rose

Harold Benjamin

T 020 8872 3026

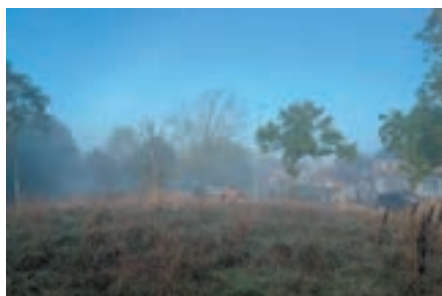
E jonathan.rose@haroldbenjamin.com

To apply contact:

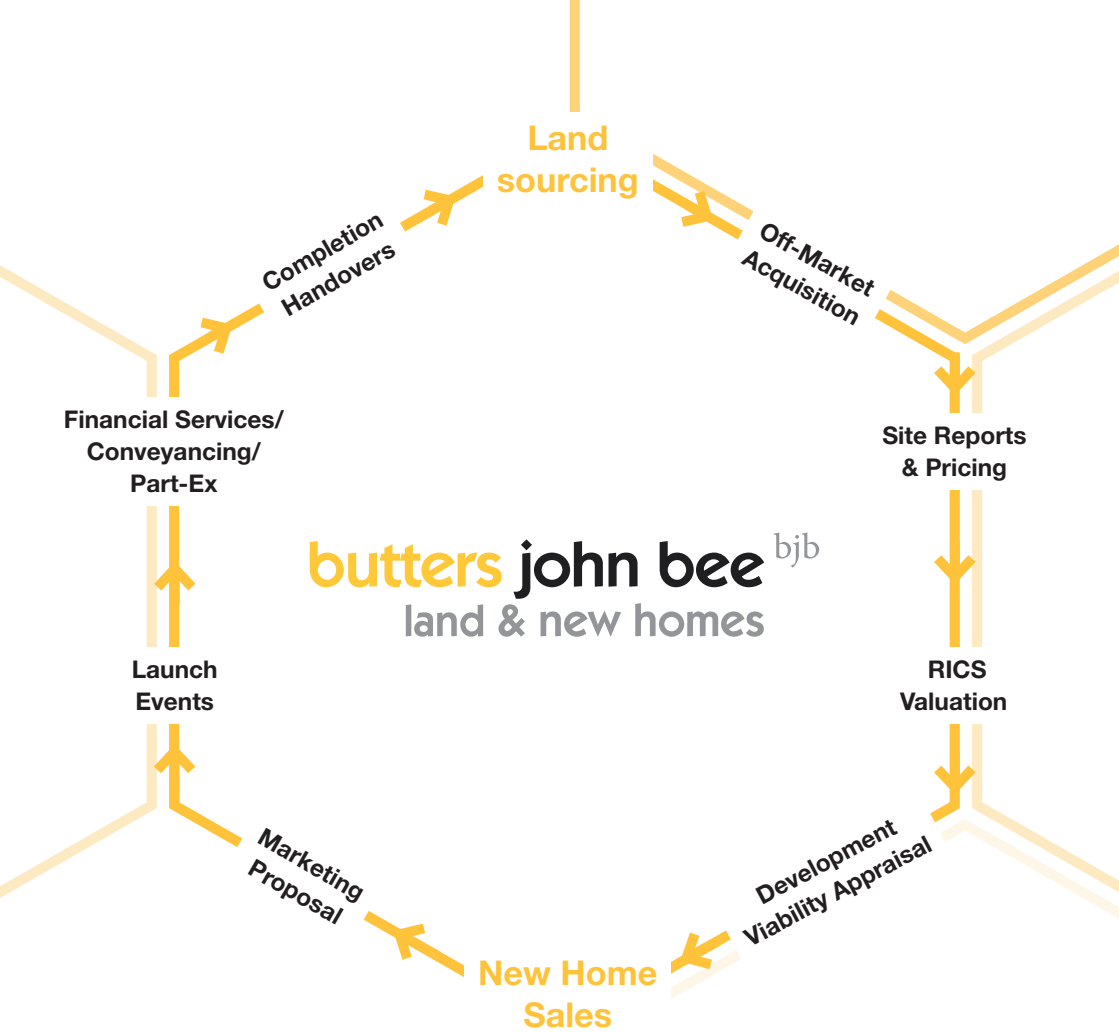
Land & New Homes

T 01782 211147

E residential-land@bjbmail.com







For a no obligation discussion please contact:

Carlos Hernandez
Regional New Homes Sales Manager
T 07741 152287
E CarlosHernandez@bjbmail.com

Sam Bowyer
New Homes Sales Manager
T 07966 447520
E sambowyer@bjbmail.com

Paul G. Beardmore BSC MRICS
Director Residential Land
T 01782 211147
E PaulBeardmore@bjbmail.com

Alexander Djukic BSc. MSc.
Graduate Surveyor
T 01782 211147
E alexdjukic@bjbmail.com

LOT
41

Land at Tunbridge Drive, Silverdale, Newcastle-under- Lyme, Staffordshire, ST5 6QU



Scan or Click

*Guide price **£10,000 plus**



- Vacant land in a residential area
- Site Area: 0.07 Acre (283 Sq m)
- Potential for development STPP
- EPC – N/A



Legal Representative

Michael Tree

Swayne Johnson Solicitors

T 01492 550694

E michaelt@swaynejohnson.com

To apply contact:

Land & New Homes

T 01782 211147

E residential-land@bjbmail.com



LOT
42

**Land at Chapel Close,
Mow Cop, Stoke-on-Trent,
Staffordshire, ST7 4NU**



Scan or Click

***Guide price £50,000 plus**



- Residential Development Site
- Site Area: 0.1 Acre (404 Sq m)
- Planning Ref: 19/5118C/OUT
- One x 4 bed house
- EPC – N/A



Legal Representative

Abdi Ebrahimi

Tinsdills

T 01782 652331

E abdi.ebrahimi@tinsdills.co.uk

To apply contact:

Land & New Homes

T 01782 211147

E residential-land@bjbmail.com



plans and elevations scale 1:100 all format pdf
 submitted: MARCH 2020



LOT
43

Land at Willfield Lane, Stockton Brook, Stoke-on- Trent, Staffordshire, ST9 9NR



Scan or Click

*Guide price **£12,500 plus**



- Freehold Amenity Land
- Site Area: 0.41 Acre (1,659 Sq m)
- EPC – N/A



Legal Representative

Natalie Fawcett

Dicksons Solicitors

T 01782 262424

E natalie.fawcett@dicksonssolicitors.co.uk

To apply contact:

Land & New Homes

T 01782 211147

E residential-land@bjbmail.com



LOT
44

House & Outbuildings at Red Hall Farm, Dales Green, Stoke-on-Trent, ST7 4RH



Scan or Click

*Guide price **£300,000 plus**



- Detached house
- In need of renovation & repair
- Outbuildings, potential for conversion STPP
- Site Area: 0.41 Acre (1659 Sq m)
- Adjoining land available as a separate lot
- EPC - TBC



Legal Representative

Hannah Stazaker

Goddard Dunbar & Associates Ltd

T 01270 580537

E Hannah.Stazaker@goddarddunbar.co.uk

To apply contact:

Land & New Homes

T 01782 284320

E residential-land@bjbmail.com



LOT
45

**102 The Boulevard, Tunstall,
Stoke-on-Trent, Staffordshire,
ST6 6DW**



Scan or Click

***Guide price £82,000 plus**



- Mid-terraced house
- Four bedrooms
- Two reception rooms
- Tenant in situ
- Annual income of £6,000 P/A
- EPC – D

Legal Representative

Steven Vasey

Walters and Plaskitt Solicitors

T 01782 819611

E steve@wpsolicitors.co.uk

To apply contact:

Hanley

T 01782 202600

E Hanley@bjbmail.com

LOT
46

**19 Marlingford Way, Norwich,
Norfolk, NR9 5HA**

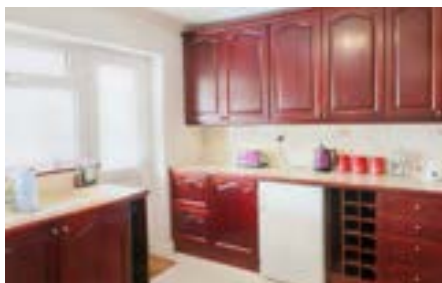


Scan or Click

*Guide price **£275,000** plus



- Detached chalet bungalow
- Three bedrooms
- In need of modernisation
- Conservatory
- Gardens front & rear
- EPC - E



Legal Representative

Tracy Guest

Ward Gethin Archer

T 01362 852918

E Tracy.guest@wga.co.uk

To apply contact:

haart Golden Triangle

T 01630 458400

E norwichgthrt@spicerhaart.co.uk



LOT
47

**1 Leyshon Street, Graig,
Pontypridd, South Wales,
CF37 1ND**



Scan or Click

*Guide price **£100,000 plus**

Darlows



- Mid-terrace house
- Four bedrooms
- Currently Let at £5,700 p/a
- In need of modernisation
- EPC – TBC



Legal Representative

Hedydd Davies

LG Williams & Prichard

T 029 2022 9716

E h.davies@cardiff-law.co.uk

To apply contact:

Darlows Pontypridd

T 01443 400111

E pontypridd@darlows.co.uk



LOT
48

**11 Nelson Street, Leek,
Staffordshire, ST13 6BB**

***Guide price £110,000 plus**



- Mid-terrace house
- One bedroom
- In need of modernisation
- Garden to the rear
- Close to Leek Town Centre
- EPC – TBC



Legal Representative

Sarah Hooper

A H Brooks

T 01538 754253

E nicolagrانت@poolealcock.co.uk

To apply contact:

Denise White Estate Agents

T 01538 381772

E Denisewhite@denise-white.co.uk



LOT
49

**10 Willow Road, Stone,
Staffordshire, ST15 8NP**



Scan or Click

***Guide price £125,000 plus**



- End-terraced house
- Three bedrooms
- Refitted kitchen and shower room
- Front and rear gardens
- Ideal investment opportunity
- EPC – E



Legal Representative

Victoria Follows

Hand Morgan and Owen Solicitors

T 01785 211411

E Vfollows@hmo.co.uk

To apply contact:

Stone

T 01785 813400

E Stone@bjbmail.com



LOT
50

**8 Emberton Street,
Wolstanton, Newcastle-under-
Lyme, Staffordshire, ST5 0BZ**



Scan or Click

***Guide price £78,000 plus**



- Mid-terrace house
- Two bedrooms
- Two reception rooms
- Ground floor bathroom
- GCH & UPVC DG
- In need of modernisation
- EPC – D



Legal Representative

Meera Singadia

Anthony Collins Solicitors

T 0121 200 3242

E Meera.singadia@anthonycollins.com

To apply contact:

Newcastle

T 01782 622155

E newcastle@bjbmail.com

The seller is a registered social landlord and is therefore prohibited from selling a property to anyone who is an employee or director of the seller, or was in the last 12 months an employee or director, or is a close relative of such a person or an agent on their behalf.

**butters
john bee**
**Investor Club
Membership**

What we offer:

- ◆ Regular market and legislation updates via our Newsletters and information bulletins
- ◆ Details of new build developments including leaseback and off plan opportunities via our Land and New Homes department
- ◆ Exclusive invitations to pre-launches and open days
- ◆ Details of potential investment properties via our network of over 200 branches
- ◆ Details of properties that our current landlords are selling with tenancies in place (including whole portfolio sales). These will be sent to our Investor Club prior to going on the open market.
- ◆ Expected rental prices and yields on all property details sent via the Investor Club



Contact **Kate Hurles**

Head of Landlord Investment

T 07960 120267

E investorserviceteam@spicerhaart.co.uk

butters john bee^{bjb}
INVESTOR CLUB

LOT
51

**4 Ravens Lane, Bignall End,
Stoke-on-Trent, Staffordshire,
ST7 8PS**



Scan or Click

***Guide price £90,000 plus**



- Mid-terrace house
- Two bedrooms
- Well presented interior
- Village location
- EPC – D



Legal Representative

Nick Mason

Salmons Solicitors

T 01782 521266

E nick.mason@salmonssolicitors.net

To apply contact:

Alsager

T 01270 877778

E alsager@bjbmail.com



* Guide/reserve price definitions can be found on page 7

LOT
52

**316 Werrington Road,
Bucknall, Stoke-on-Trent,
Staffordshire, ST2 9AU**



Scan or Click

***Guide price £73,000 plus**



- Mid-terrace house
- Three bedrooms
- Utility/wet room
- First floor bathroom
- Large rear garden
- EPC - D



Legal Representative

Kerry Dundas

Dundas Law

T 01782 528338

E kerry@dundaslaw.co.uk

To apply contact:

Hanley

T 01782 202600

E hanley@bjbmail.com



LOT
53

**1 Rope Lane, Crewe, Cheshire,
CW2 6RB**



Scan or Click

***Guide price £207,000 plus**



- True bungalow
- Two bedrooms
- In need of modernisation
- Generous gardens
- EPC – D



Legal Representative

Jonathan Manning

Hibberts

T 01270 215117

E jhm@hibberts.com

To apply contact:

Crewe

T 01270 213541

E crewe@bjbmail.com



* Guide/reserve price definitions can be found on page 7

Professional services

- ◆ Survey and Valuation
- ◆ Property Management
- ◆ Business Rate Assessments
- ◆ Energy Performance
Certificates
- ◆ Rent Reviews
- ◆ Lease Renewals
- ◆ Dilapidations
- ◆ Schedule of Condition
- ◆ Compulsory Purchase and
Compensation
- ◆ Capital Allowance Tax
Relief Survey

**Your Regional Commercial
Property Consultants**

01782 212201

butters john bee ^{bjb}

LOT
54

**117 St Marys Road, Longton,
Stoke-on-Trent, Staffordshire,
ST3 5DW**



Scan or Click

***Guide price £95,000 plus**



- Semi-detached house
- Three bedrooms
- In need of modernisation
- Garden
- EPC – E



Legal Representative

Nicola Grant

Poole Alcock

T 01606 530960

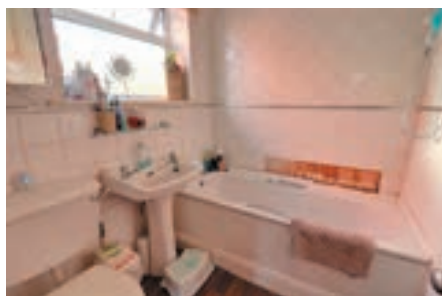
E

To apply contact:

Longton

T 01782 594777

E longton@bjbmail.com



LOT
55

**43 Vivian Road, Fenton, Stoke-
on-Trent, Staffordshire,
ST4 3JG**



Scan or Click

***Guide price £63,000 plus**



- End-terrace house
- Two bedrooms
- In need of modernisation
- Enclosed rear yard
- EPC – D



Legal Representative

Darren Neighbour

Poole Alcock

T 01606 530960

E Darren.Neighbour@poolealcock.co.uk

To apply contact:

Longton

T 01782 594777

E longton@bjbmail.com



LOT
56

**2 Audmore Road, Gnosall,
Stafford, Staffordshire,
ST20 0HA**



Scan or Click

***Guide price £120,000 plus**



- Former Post Office with residence
- Planning for residential house
- Planning ref: 21/34211/FUL
- Village location
- Freehold
- EPC – G



Legal Representative

James Marris

G.M. Wilson Solicitors LTD

T 01924 386700

E info@gmwilson.co.uk

To apply contact:

Stafford

T 01785 246000

E stafford@bjbmail.com



LOT
57

**37 Robert Heath Street,
Smallthorne, Stoke-on-Trent,
Staffordshire, ST6 1LH**



Scan or Click

***Guide price £55,000 plus**



- **Mid-terrace house**
- **Two bedrooms**
- **Well-presented interior**
- **On-Street Parking**
- **EPC - D**

It is suggested that potential purchaser's make their own enquiries of mortgage lenders as to whether the property is mortgageable prior to making a bid at auction.

Legal Representative

Abdi Ebrahimi

Tinsdills Solicitors

T 01782 652331

E abdi.ebrahimi@tinsdills.co.uk

To apply contact:

Hanley

T 01782 202600

E hanley@bjbmail.com

LOT
58

**8 Wise Street, Dresden, Stoke-
on-Trent, Staffordshire,
ST3 4PQ**

*Guide price **£75,000 plus**



- End town-house
- Two/three bedrooms
- In need of selective updating
- EPC – D



Legal Representative

Clint Hughes

Jamesons Solicitors

T 01782 719009

E clinthughes@jamesons-conveyancing.co.uk

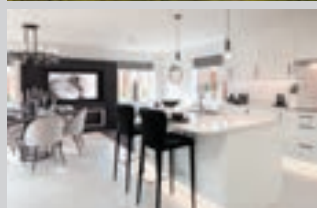
To apply contact:

Longton

T 01782 594777

E longton@bjbmail.com





Hayfield Lakes is a distinctive collection of two, three, four and five-bedroom homes. This brand new development of 50 homes, will take pride of place in the charming village of Clophill, next to the new 300-acre Clophill Lakes Nature Reserve.

These Zero Carbon Ready homes all feature luxurious specification and quality of workmanship for which Hayfield are renowned. Flitwick train station is only four miles away, offering regular direct services to London St Pancras in 41 minutes. Prices from £575,000 to over £1,000,000.

**Contact us for more details
or to request the brochure
01234 380313
hayfield.lakes@haart.co.uk**

H
HAYFIELD
haart
LAND & NEW HOMES



LOT
59

**74 Heath Street, Chesterton,
Newcastle-under-Lyme,
Staffordshire, ST5 7ND**



Scan or Click

***Guide price £87,000 plus**



- Semi-detached House
- Three bedrooms
- Ground floor WC
- GCH & DG
- In need of modernization
- Large rear garden
- Off road parking
- EPC – C



Legal Representative

Meera Singadia

Anthony Collins Solicitors

T 0121 200 3242

E Meera.singadia@anthonycollins.com

To apply contact:

Newcastle

T 01782 622155

E newcastle@bjbmail.com

The seller is a registered social landlord and is therefore prohibited from selling a property to anyone who is an employee or director of the seller, or was in the last 12 months an employee or director, or is a close relative of such a person or an agent on their behalf.

butters ^{bjb}
john bee



The region's number 1 property auctioneer*

With 9 auctions in 2023 it's
the fastest way to sell your
property.

For a free appraisal of your
property call **0800 090 2200**
or email **auction@bjbmail.com**

butters ^{bjb} **john bee**

* Source: EI Group

LOT
60

**6 Fairview Avenue, Weston,
Crewe, Cheshire, CW2 5LX**

***Guide price £207,000 plus**



- Detached bungalow
- Three bedrooms
- In need of modernisation
- Quiet village location
- EPC – E



Legal Representative

Christopher Taylor

KPL Solicitors

T 01204 527 777

E Cat@kbl.co.uk

To apply contact:

Crewe

T 01270 213541

E crewe@bjbmail.com



LOT
61

**61 Merrick Street, Hanley,
Stoke-on-Trent, Staffordshire,
ST1 2LN**



Scan or Click

***Guide price £70,000 plus**



- Mid-terraced house
- Two bedrooms
- Two reception rooms
- Potential yield approx. £6,600 p/a
- Modern interior
- Cash buyers only
- EPC – D



Legal Representative

Kerry Dundas

Dundas Law

T 01782 528338

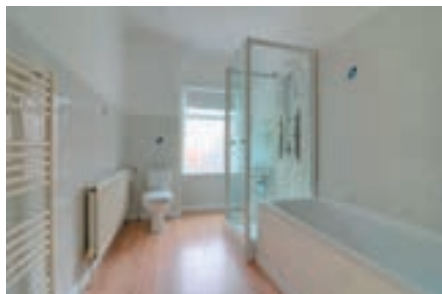
E kerry@dundaslaw.co.uk

To apply contact:

Hanley

T 01782 202600

E hanley@bjbmail.com



LOT
62

**6 Chatterley Road, Tunstall,
Stoke-on-Trent, Staffordshire,
ST6 5JF**



Scan or Click

***Guide price £200,000 plus**



- Detached property
- Potential of 6 bed HMO
- Five beds with ensembles
- Large reception area
- Kitchen/breakfast room
- Within walking distance to Tunstall Town Centre
- Parking area for up to five vehicles
- EPC – TBC



Legal Representative

TBC

To apply contact:

Hanley

T 01782 202600

E hanley@bjbmail.com





What we offer:

- ◆ Portfolio reviews
- ◆ Advice on expanding investment portfolios and maximising returns
- ◆ Membership of our Investor Club
- ◆ Bespoke portfolio management services
- ◆ A single point of contact for investment landlords within the Investor Services Team
- ◆ One terms of business and agreed fee structure for investors with multi properties
- ◆ Hassle free takeover of management service for existing investment portfolios

**butters john
bee Investor
Services Team**

Contact **Kate Hurles**

Head of Landlord Investment

T 07960 120267

E investorserviceteam@spicerhaart.co.uk



butters john bee^{bjb}
INVESTOR SERVICES TEAM

LOT
63

**39 Machin Crescent, Bradwell,
Newcastle-under-Lyme,
Staffordshire, ST5 8NL**



Scan or Click

***Guide price £87,000 plus**



- Semi-detached house
- Two bedrooms
- Lounge diner
- GCH & UPVC DG
- In need of modernization
- Generous garden
- Driveway for 2 cars
- EPC – D



Legal Representative

Meera Singadia

Anthony Collins Solicitors

T 0121 200 3242

E Meera.singadia@anthonycollins.com

To apply contact:

Newcastle

T 01782 622155

E newcastle@bjbmail.com

The seller is a registered social landlord and is therefore prohibited from selling a property to anyone who is an employee or director of the seller, or was in the last 12 months an employee or director, or is a close relative of such a person or an agent on their behalf.

LOT
64

**15 Albion Street, Crewe,
Cheshire, CW2 8NB**



Scan or Click

***Guide price £112,500 plus**



- Semi-detached house
- Three bedrooms
- In need of modernisation
- Garden to the rear
- Off road parking
- EPC – E



Legal Representative

Jonathon Manning

Hibberts

T 01270 215117

E jhm@hibberts.com

To apply contact:

Crewe

T 01270 213541

E Crewe@bjbmail.com



LOT
65

**12 Meaford Avenue, Stone,
Staffordshire, ST15 8LT**



Scan or Click

***Guide price £140,000 plus**



- Mid-terraced house
- Three bedrooms
- Beautiful garden to the rear
- Located edge of Town Centre
- EPC – D



Legal Representative

Alexandra Bradbury

Clowes Solicitors

T 01782 444 204

E alex@clowessolicitors.co.uk

To apply contact:

Stone

T 01785 813400

E Stone@bjbmail.com



LOT
66

**47 Orme Road, Pool Dam,
Newcastle-under-Lyme,
Staffordshire, ST5 2ND**



Scan or Click

***Guide price £91,000 plus**



- Mid-townhouse
- Two double bedrooms
- In need of modernization
- Gardens front & rear
- Close to Town Centre
- EPC – C



Legal Representative

Janet Farrell

Salmons Solicitors

T 01782 639827

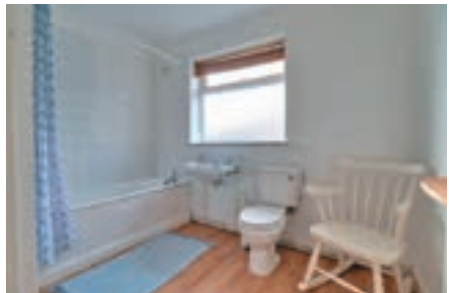
E janet.farrell@salmonssolicitors.net

To apply contact:

Newcastle

T 01782 622155

E newcastle@bjbmail.com



LOT
67

**57 Bemersley Road, Ball Green,
Stoke-on-Trent, Staffordshire, ST6 8JF**

***Guide price £91,000 plus**



- End-terraced house
- Three bedrooms
- Three reception rooms
- Ground floor shower & WC
- First floor bathroom
- Ideal investment property
- EPC - E



Legal Representative

Kerry Dundas

Dundas Law

T 01782 528338

E kerry@dundaslaw.co.uk

To apply contact:

Hanley

T 01782 202600

E hanley@bjbmail.com



Notes:

3rd Edition. Reproduced with the consent of RICS.

The general conditions (including any extra general conditions) apply to the contract except to the extent that they are varied by special conditions or by an addendum.

Glossary

This glossary applies to the [auction conduct conditions](#) and the [sale conditions](#).

Wherever it makes sense:

- singular words can be read as plurals, and plurals as singular words;
- a "person" includes a corporate body;
- words of one gender include the other genders;
- references to legislation are to that legislation as it may have been modified or re-enacted by the date of the [auction](#) or the [contract date](#) (as applicable); and
- where the following words printed in bold black type appear in bold blue type they have the specified meanings.

Actual completion date The date when [completion](#) takes place or is treated as taking place for the purposes of apportionment and calculating interest.

Addendum An amendment or addition to the [conditions](#) or to the [particulars](#) or to both whether contained in a supplement to the [catalogue](#), a written notice from the auctioneers or an oral announcement at the [auction](#).

Agreed completion date Subject to [condition](#) G9.3:

- (a) the date specified in the [special conditions](#); or
- (b) if no date is specified, 20 [business days](#) after the [contract date](#); but if that date is not a [business day](#) the first subsequent [business day](#).

Approved financial institution Any bank or building society that has signed up to the Banking Code or Business Banking Code or is otherwise acceptable to the [auctioneers](#).

Arrears Arrears of rent and other sums due under the [tenancies](#) and still outstanding on the [actual completion date](#).

Arrears schedule The arrears schedule (if any) forming part of the [special conditions](#).

Auction The auction advertised in the [catalogue](#).

Auction conduct conditions The conditions so headed, including any extra auction conduct conditions.

Auctioneers The auctioneers at the [auction](#).

Business day Any day except (a) a Saturday or a Sunday; (b) a bank holiday in England and Wales; or (c) Good Friday or Christmas Day.

Buyer The person who agrees to buy the [lot](#) or, if applicable, that person's personal representatives: if two or more are jointly the [buyer](#) their obligations can be enforced against them jointly or against each of them separately.

Catalogue The catalogue to which the [conditions](#) refer including any supplement to it.

Completion Unless otherwise agreed between [seller](#) and [buyer](#) (or their conveyancers) the occasion when both [seller](#) and [buyer](#) have complied with their obligations under the [contract](#) and the balance of the [price](#) is unconditionally received in the [seller's](#) conveyancer's client account.

Condition One of the [auction conduct conditions](#) or [sales conditions](#).

Contract The contract by which the [seller](#) agrees to sell and the [buyer](#) agrees to buy the [lot](#).

Contract date The date of the [auction](#) or, if the [lot](#) is not sold at the [auction](#):

- (a) the date of the [sale memorandum](#) signed by both the [seller](#) and [buyer](#); or
- (b) if contracts are exchanged, the date of exchange. If exchange is not effected in person or by an irrevocable agreement to exchange made by telephone, fax or electronic mail the date of exchange is the date on which both parts have been signed and posted or otherwise placed beyond normal retrieval.

Documents Documents of title (including, if title is registered, the entries on the register and the title plan) and other documents listed or referred to in the [special conditions](#) relating to the [lot](#).

Financial charge A charge to secure a loan or other financial indebtedness (not including a rentcharge).

General conditions That part of the [sale conditions](#) so headed, including any extra general conditions.

Interest rate If not specified in the [special conditions](#), 4% above the base rate from time to time of Barclays Bank plc. (The interest rate will also apply to judgment debts, if applicable.)

Lot Each separate property described in the [catalogue](#) or (as the case may be) the property that the [seller](#) has agreed to sell and the [buyer](#) to buy (including [chattels](#), if any).

Old arrears [Arrears](#) due under any of the [tenancies](#) that are not "new tenancies" as defined by the Landlord and Tenant (Covenants) Act 1995.

Particulars The section of the [catalogue](#) that contains descriptions of each [lot](#) (as varied by any [addendum](#)).

Practitioner An insolvency practitioner for the purposes of the Insolvency Act 1986 (or, in relation to jurisdictions outside the United Kingdom, any similar official).

Price The price that the [buyer](#) agrees to pay for the [lot](#).

Ready to complete Ready, willing and able to complete: if [completion](#) would enable the [seller](#) to discharge all [financial charges](#) secured on the [lot](#) that have to be discharged by [completion](#), then those outstanding financial charges do not prevent the [seller](#) from being [ready to complete](#).

Sale conditions The [general conditions](#) as varied by any [special conditions](#) or [addendum](#).

Sale memorandum The form so headed (whether or not set out in the [catalogue](#)) in which the terms of the [contract](#) for the sale of the [lot](#) are recorded.

Seller The person selling the [lot](#). If two or more are jointly the [seller](#) their obligations can be enforced against them jointly or against each of them separately.

Special conditions Those of the [sale conditions](#) so headed that relate to the [lot](#).

Tenancies Tenancies, leases, licences to occupy and agreements for lease and any documents varying or supplemental to them.

Tenancy schedule The tenancy schedule (if any) forming part of the [special conditions](#).

Transfer Transfer includes a conveyance or assignment (and "to transfer" includes "to convey" or "to assign").

TUPE The Transfer of Undertakings (Protection of Employment) Regulations 2006.

VAT Value Added Tax or other tax of a similar nature.

VAT option An option to tax.

We (and us and our) The [auctioneers](#).

You (and your) Someone who has a copy of the [catalogue](#) or who attends or bids at the [auction](#), whether or not a [buyer](#).

Important notice

A prudent buyer will, before bidding for a lot at an auction:

- Take professional advice from a conveyancer and, in appropriate cases, a chartered surveyor and an accountant;
- Read the conditions;
- Inspect the [lot](#);
- Carry out usual searches and make usual enquiries;
- Check the content of all available leases and other documents relating to the [lot](#);
- Have finance available for the deposit and purchase price;
- Check whether VAT registration and election is advisable;

The conditions assume that the buyer has acted like a prudent buyer.

If you choose to buy a lot without taking these normal precautions you do so at your own risk.

Auction Conduct Conditions

A1 Introduction

- A1.1 Words in bold blue type have special meanings, which are defined in the Glossary.
- A1.2 The **catalogue** is issued only on the basis that **you** accept these **auction conduct conditions**. They govern **our** relationship with **you** and cannot be disappled or varied by the **sale conditions** (even by a **condition** purporting to replace the whole of the Common Auction Conditions). They can be varied only if **we** agree.

A2 Our role

- A2.1 As agents for each **seller** we have authority to:
- (a) prepare the **catalogue** from information supplied by or on behalf of each **seller**;
 - (b) offer each **lot** for sale;
 - (c) sell each **lot**;
 - (d) receive and hold deposits;
 - (e) sign each **sale memorandum**; and
 - (f) treat a **contract** as repudiated if the **buyer** fails to sign a **sale memorandum** or pay a deposit as required by these **auction conduct conditions**.
- A2.2 **Our** decision on the conduct of the **auction** is final.
- A2.3 **We** may cancel the **auction**, or alter the order in which **lots** are offered for sale. **We** may also combine or divide **lots**. A **lot** may be sold or withdrawn from sale prior to the **auction**.
- A2.4 **You** acknowledge that to the extent permitted by law **we** owe **you** no duty of care and you have no claim against **us** for any loss.

A3 Bidding and reserve prices

- A3.1 All bids are to be made in pounds sterling exclusive of any applicable **VAT**.
- A3.2 **We** may refuse to accept a bid. **We** do not have to explain why.
- A3.3 If there is a dispute over bidding **we** are entitled to resolve it, and **our** decision is final.
- A3.4 Unless stated otherwise each **lot** is subject to a reserve price (which may be fixed just before the **lot** is offered for sale). If no bid equals or exceeds that reserve price the **lot** will be withdrawn from the **auction**.
- A3.5 Where there is a reserve price the **seller** may bid (or ask **us** or another agent to bid on the **seller's** behalf) up to the reserve price but may not make a bid equal to or exceeding the reserve price. **You** accept that it is possible that all bids up to the reserve price are bids made by or on behalf of the **seller**.
- A3.6 Where a guide price (or range of prices) is given that guide is the minimum price at which, or range of prices within which, the **seller** might be prepared to sell at the date of the guide price. But guide prices may change. The last published guide price will normally be at or above any reserve price, but not always – as the **seller** may fix the final reserve price just before bidding commences.

A4 The particulars and other information

- A4.1 **We** have taken reasonable care to prepare **particulars** that correctly describe each **lot**. The **particulars** are based on information supplied by or on behalf of the **seller**. **You** need to check that the information in the **particulars** is correct.
- A4.2 If the **special conditions** do not contain a description of the **lot**, or simply refer to the relevant **lot** number, you take the risk that the description contained in the **particulars** is incomplete or inaccurate, as the **particulars** have not been prepared by a conveyancer and are not intended to form part of a legal contract.
- A4.3 The **particulars** and the **sale conditions** may change prior to the **auction** and it is **your** responsibility to check that **you** have the correct versions.
- A4.4 If **we** provide information, or a copy of a document, provided by others **we** do so only on the basis that **we** are not responsible for the accuracy of that information or document.

A5 The contract

- A5.1 A successful bid is one **we** accept as such (normally on the fall of the hammer). This **condition** A5 applies to **you** if **you** make the successful bid for a **lot**.
- A5.2 **You** are obliged to buy the **lot** on the terms of the **sale memorandum** at the **price** you bid plus **VAT** (if applicable).
- A5.3 **You** must before leaving the **auction**:
- (a) provide all information **we** reasonably need from **you** to enable us to complete the **sale memorandum** (including proof of your identity if required by **us**);
 - (b) sign the completed **sale memorandum**; and
 - (c) pay the deposit.
- A5.4 If **you** do not **we** may either:
- (a) as agent for the **seller** treat that failure as **your** repudiation of the **contract** and offer the **lot** for sale again: the **seller** may then have a claim against **you** for breach of contract; or
 - (b) sign the **sale memorandum** on **your** behalf.
- A5.5 The deposit:
- (a) is to be held as stakeholder where **VAT** would be chargeable on the deposit were it to be held as agent for the **seller**, but otherwise is to be held as stated in the **sale conditions**; and
 - (b) must be paid in pounds sterling by cheque or by bankers' draft made payable to **us** on an **approved financial institution**. The extra auction conduct conditions may state if **we** accept any other form of payment.
- A5.6 **We** may retain the **sale memorandum** signed by or on behalf of the **seller** until the deposit has been received in cleared funds.
- A5.7 If the **buyer** does not comply with its obligations under the **contract** then:
- (a) **you** are personally liable to buy the **lot** even if **you** are acting as an agent; and
 - (b) **you** must indemnify the **seller** in respect of any loss the **seller** incurs as a result of the **buyer's** default.
- A5.8 Where the **buyer** is a company **you** warrant that the **buyer** is properly constituted and able to buy the **lot**.

A6 Extra Auction Conduct Conditions

- A6.1 Despite any **condition** to the contrary:
- (a) The minimum deposit **we** accept is £1,000 (or the total **price**, if less). A **special condition** may, however, require a higher minimum deposit
 - (b) Sub-clause (a) of **Auction Conduct Condition** A5.5 shall be deemed to be deleted and shall be replaced with the following: "(a) is to be held as agent for the **seller** unless expressly stated otherwise in the **special conditions** provided that where **VAT** would be chargeable on the deposit were it to be held as agent for the **seller**, the deposit will be held as stakeholder despite any contrary provision in any **condition**; and"
 - (c) where the deposit is paid to **us** to be held as stakeholder, **we** may if **we** choose transfer all or part of it to the **seller's** conveyancer for them to hold as stakeholder in **our** place. Any part of the deposit not so transferred will be held by **us** as stakeholder.
- A6.2 The **buyer** will pay an administration fee of £800 plus **VAT** to **us** for each **lot** purchased at the **auction**, prior to **auction** or post **auction** in addition to the deposit.
- A6.3 The **buyer** will provide proof of identity and residency to **us**.
- A6.4 **We** may accept payment by debit or credit card. Credit card payment is not allowed for payment of deposit.
- A6.5 **We** may refuse admittance to any person attending the **auction**. **We** do not have to explain why.
- A6.6 The **buyer** will be photographed at the auction before the contract is signed.
- A6.7 The **Seller** will not be under any obligation to remove any rubbish or other items whatsoever from the **lot** prior to **completion** of the purchase and the **Buyer** will not be allowed to delay **completion** or refuse to complete or claim compensation in respect of any rubbish or other items remaining on the **lot**.

General Conditions

Words in bold blue type have special meanings, which are defined in the Glossary.

The **general conditions** (including any extra general conditions) apply to the **contract** except to the extent that they are varied by **special conditions** or by an **addendum**.

G1 The lot

G1.1 The **lot** (including any rights to be granted or reserved, and any exclusions from it) is described in the **special conditions**, or if not so described the **lot** is that referred to in the **sale memorandum**.

G1.2 The **lot** is sold subject to any **tenancies** disclosed by the **special conditions**, but otherwise with vacant possession on **completion**.

G1.3 The **lot** is sold subject to all matters contained or referred to in the **documents**, but excluding any **financial charges**: these the seller must discharge on or before **completion**.

G1.4 The **lot** is also sold subject to such of the following as may affect it, whether they arise before or after the **contract date** and whether or not they are disclosed by the **seller** or are apparent from inspection of the lot or from the **documents**:

- (a) matters registered or capable of registration as local land charges;
- (b) matters registered or capable of registration by any competent authority or under the provisions of any statute;
- (c) notices, orders, demands, proposals and requirements of any competent authority;
- (d) charges, notices, orders, restrictions, agreements and other matters relating to town and country planning, highways or public health;
- (e) rights, easements, quasi-easements, and wayleaves;
- (f) outgoing and other liabilities;
- (g) any interest which overrides, within the meaning of the Land Registration Act 2002;
- (h) matters that ought to be disclosed by the searches and enquiries a prudent buyer would make, whether or not the **buyer** has made them; and
- (i) anything the **seller** does not and could not reasonably know about.

G1.5 Where anything subject to which the **lot** is sold would expose the **seller** to liability the **buyer** is to comply with it and indemnify the **seller** against that liability.

G1.6 The **seller** must notify the **buyer** of any notices, orders, demands, proposals and requirements of any competent authority of which it learns after the **contract date** but the **buyer** must comply with them and keep the **seller** indemnified.

G1.7 The **lot** does not include any tenant's or trade fixtures or fittings.

G1.8 Where chattels are included in the **lot** the **buyer** takes them as they are at **completion** and the **seller** is not liable if they are not fit for use.

G1.9 The **buyer** buys with full knowledge of:

- (a) the **documents**, whether or not the **buyer** has read them; and
- (b) the physical condition of the **lot** and what could reasonably be discovered on inspection of it, whether or not the **buyer** has inspected it.

G1.10 The **buyer** is not to rely on the information contained in the **particulars** but may rely on the **seller's** conveyancer's written replies to preliminary enquiries to the extent stated in those replies.

G2 Deposit

G2.1 The amount of the deposit is the greater of:

- (a) any minimum deposit stated in the **auction conduct conditions** (or the total **price**, if this is less than that minimum); and
- (b) 10% of the **price** (exclusive of any **VAT** on the **price**).

G2.2 The deposit

- (a) must be paid in pounds sterling by cheque or banker's draft drawn on an **approved financial institution** (or by any other means of payment that the **auctioneers** may accept); and
- (b) is to be held as stakeholder unless the **auction conduct conditions** provide that it is to be held as agent for the

seller.

G2.3 Where the **auctioneers** hold the deposit as stakeholder they are authorised to release it (and interest on it if applicable) to the **seller** on **completion** or, if **completion** does not take place, to the person entitled to it under the **sale conditions**.

G2.4 If a cheque for all or part of the deposit is not cleared on first presentation the **seller** may treat the **contract** as at an end and bring a claim against the **buyer** for breach of contract.

G2.5 Interest earned on the deposit belongs to the **seller** unless the **sale conditions** provide otherwise.

G3 Between contract and completion

G3.1 Unless the **special conditions** state otherwise, the **seller** is to insure the **lot** from and including the **contract date** to **completion** and:

- (a) produce to the **buyer** on request all relevant insurance details;
- (b) pay the premiums when due;
- (c) if the **buyer** so requests, and pays any additional premium, use reasonable endeavours to increase the sum insured or make other changes to the policy;
- (d) at the request of the **buyer** use reasonable endeavours to have the **buyer's** interest noted on the policy if it does not cover a contracting purchaser;
- (e) unless otherwise agreed, cancel the insurance at **completion**, apply for a refund of premium and (subject to the rights of any tenant or other third party) pay that refund to the **buyer**; and
- (f) (subject to the rights of any tenant or other third party) hold on trust for the **buyer** any insurance payments that the **seller** receives in respect of loss or damage arising after the **contract date** or assign to the **buyer** the benefit of any claim; and the **buyer** must on **completion** reimburse to the **seller** the cost of that insurance (to the extent not already paid by the **buyer** or a tenant or other third party) for the period from and including the **contract date** to **completion**.

G3.2 No damage to or destruction of the **lot** nor any deterioration in its condition, however caused, entitles the **buyer** to any reduction in **price**, or to delay **completion**, or to refuse to complete.

G3.3 Section 47 of the Law of Property Act 1925 does not apply.

G3.4 Unless the **buyer** is already lawfully in occupation of the **lot** the **buyer** has no right to enter into occupation prior to **completion**.

G4 Title and identity

G4.1 Unless **condition** G4.2 applies, the **buyer** accepts the title of the **seller** to the **lot** as at the **contract date** and may raise no requisition or objection except in relation to any matter that occurs after the **contract date**.

G4.2 If any of the **documents** is not made available before the **auction** the following provisions apply:

- (a) The **buyer** may raise no requisition on or objection to any of the documents that is made available before the auction.
- (b) If the **lot** is registered land the **seller** is to give to the **buyer** within five **business days** of the **contract date** an official copy of the entries on the register and title plan and, where noted on the register, of all documents subject to which the **lot** is being sold.
- (c) If the **lot** is not registered land the **seller** is to give to the **buyer** within five **business days** an abstract or epitome of title starting from the root of title mentioned in the **special conditions** (or, if none is mentioned, a good root of title more than fifteen years old) and must produce to the **buyer** the original or an examined copy of every relevant **document**.
- (d) If title is in the course of registration, title is to consist of certified copies of:
- (i) the application for registration of title made to the land registry;
- (ii) the **documents** accompanying that application;
- (iii) evidence that all applicable stamp duty land tax relating to that application has been paid; and
- (iv) a letter under which the **seller** or its conveyancer agrees to use all reasonable endeavours to answer any requisitions raised by the land registry and to instruct the land registry to

- send the completed registration documents to the **buyer**.
 (e) The **buyer** has no right to object to or make requisitions on any title information more than seven **business days** after that information has been given to the **buyer**.
- G4.3 Unless otherwise stated in the **special conditions** the **seller** sells with full title guarantee except that (and the **transfer** shall so provide):
 (a) the covenant set out in section 3 of the Law of Property (Miscellaneous Provisions) Act 1994 shall not extend to matters recorded in registers open to public inspection; these are to be treated as within the actual knowledge of the **buyer**; and
 (b) the covenant set out in section 4 of the Law of Property (Miscellaneous Provisions) Act 1994 shall not extend to any condition or tenant's obligation relating to the state or condition of the **lot** where the **lot** is leasehold property.
- G4.4 The **transfer** is to have effect as if expressly subject to all matters subject to which the **lot** is sold under the **contract**.
- G4.5 The **seller** does not have to produce, nor may the **buyer** object to or make a requisition in relation to, any prior or superior title even if it is referred to in the **documents**.
- G4.6 The **seller** (and, if relevant, the **buyer**) must produce to each other such confirmation of, or evidence of, their identity and that of their mortgagees and attorneys (if any) as is necessary for the other to be able to comply with applicable Land Registry Rules when making application for registration of the transaction to which the **conditions** apply.
- G5 Transfer**
- G5.1 Unless a form of **transfer** is prescribed by the **special conditions**:
 (a) the **buyer** must supply a draft **transfer** to the **seller** at least ten **business days** before the **agreed completion date** and the engrossment (signed as a deed by the **buyer** if **condition** G5.2 applies) five **business days** before that date or (if later) two **business days** after the draft has been approved by the **seller**; and
 (b) the **seller** must approve or revise the draft **transfer** within five **business days** of receiving it from the **buyer**.
- G5.2 If the **seller** remains liable in any respect in relation to the **lot** (or a tenancy) following completion the **buyer** is specifically to covenant in the transfer to indemnify the seller against that liability.
- G5.3 The **seller** cannot be required to **transfer** the **lot** to anyone other than the **buyer**, or by more than one **transfer**.
- G6 Completion**
- G6.1 **Completion** is to take place at the offices of the **seller's** conveyancer, or where the **seller** may reasonably require, on the **agreed completion date**.
 The **seller** can only be required to complete on a **business day** and between the hours of 0930 and 1700.
- G6.2 The amount payable on **completion** is the balance of the **price** adjusted to take account of apportionments plus (if applicable) **VAT** and interest.
- G6.3 Payment is to be made in pounds sterling and only by:
 (a) direct transfer to the **seller's** conveyancer's client account; and
 (b) the release of any deposit held by a stakeholder.
- G6.4 Unless the **seller** and the **buyer** otherwise agree, **completion** cannot take place until both have complied with their obligations under the **contract** and the balance of the **price** is unconditionally received in the **seller's** conveyancer's client account.
- G6.5 If **completion** takes place after 1400 hours for a reason other than the **seller's** default it is to be treated, for the purposes of apportionment and calculating interest, as if it had taken place on the next **business day**.
- G6.6 Where applicable the **contract** remains in force following **completion**.
- G7 Notice to complete**
- G7.1 The **seller** or the **buyer** may on or after the **agreed completion date** but before **completion** give the other notice to complete within ten **business days** (excluding the date on which the notice is given) making time of the essence.
- G7.2 The person giving the notice must be **ready to complete**.
- G7.3 If the **buyer** fails to comply with a notice to complete the **seller** may, without affecting any other remedy the **seller** has:
 (a) terminate the **contract**;
 (b) claim the deposit and any interest on it if held by a stakeholder;
 (c) forfeit the deposit and any interest on it;
 (d) resell the **lot**; and
 (e) claim damages from the **buyer**.
- G7.4 If the **seller** fails to comply with a notice to complete the **buyer** may, without affecting any other remedy the **buyer** has:
 (a) terminate the **contract**; and
 (b) recover the deposit and any interest on it from the **seller** or, if applicable, a stakeholder.
- G8 If the contract is brought to an end**
 If the **contract** is lawfully brought to an end:
 (a) the **buyer** must return all papers to the **seller** and appoints the **seller** its agent to cancel any registration of the **contract**; and
 (b) the **seller** must return the deposit and any interest on it to the **buyer** (and the **buyer** may claim it from the stakeholder, if applicable) unless the **seller** is entitled to forfeit the deposit under **condition** G7.3.
- G9 Landlord's licence**
- G9.1 Where the **lot** is or includes leasehold land and licence to assign is required this **condition** G9 applies.
- G9.2 The **contract** is conditional on that licence being obtained, by way of formal licence if that is what the landlord lawfully requires.
- G9.3 The **agreed completion date** is not to be earlier than the date five **business days** after the **seller** has given notice to the **buyer** that licence has been obtained.
- G9.4 The **seller** must:
 (a) use all reasonable endeavours to obtain the licence at the **seller's** expense; and
 (b) enter into any authorised guarantee agreement properly required.
- G9.5 The **buyer** must:
 (a) promptly provide references and other relevant information; and
 (b) comply with the landlord's lawful requirements.
- G9.6 If within three months of the **contract date** (or such longer period as the **seller** and **buyer** agree) the licence has not been obtained the **seller** or the **buyer** may (if not then in breach of any obligation under this **condition** G9) by notice to the other terminate the **contract** at any time before licence is obtained. That termination is without prejudice to the claims of either **seller** or **buyer** for breach of this **condition** G9.
- G10 Interest and apportionments**
- G10.1 If the **actual completion date** is after the **agreed completion date** for any reason other than the **seller's** default the **buyer** must pay interest at the **interest rate** on the **price** (less any deposit paid) from the **agreed completion date** up to and including the **actual completion date**.
- G10.2 Subject to **condition** G11 the **seller** is not obliged to apportion or account for any sum at **completion** unless the **seller** has received that sum in cleared funds. The **seller** must pay to the **buyer** after **completion** any sum to which the **buyer** is entitled that the **seller** subsequently receives in cleared funds.
- G10.3 Income and outgoings are to be apportioned at **actual completion date** unless:
 (a) the **buyer** is liable to pay interest; and
 (b) the **seller** has given notice to the **buyer** at any time up to **completion** requiring apportionment on the date from which interest becomes payable by the **buyer**; in which event income and outgoings are to be apportioned on the date from which interest becomes payable by the **buyer**.
- G10.4 Apportionments are to be calculated on the basis that:
 (a) the **seller** receives income and is liable for outgoings for the whole of the day on which apportionment is to be made; (b) annual income and expenditure accrues at an equal daily rate assuming 365 days in a year, and income and expenditure relating to some other period accrues at an equal daily rate during the period to which it relates; and

(c) where the amount to be apportioned is not known at **completion** apportionment is to be made by reference to a reasonable estimate and further payment is to be made by **seller** or **buyer** as appropriate within five **business days** of the date when the amount is known.

G11 Arrears

Part 1 Current rent

G11.1 "Current rent" means, in respect of each of the **tenancies** subject to which the lot is sold, the instalment of rent and other sums payable by the tenant in advance on the most recent rent payment date on or within four months preceding **completion**.

G11.2 If on **completion** there are any **arrears** of current rent the **buyer** must pay them, whether or not details of those **arrears** are given in the **special conditions**.

G11.3 Parts 2 and 3 of this **condition** G11 do not apply to **arrears** of current rent.

Part 2 Buyer to pay for arrears

G11.4 Part 2 of this **condition** G11 applies where the **special conditions** give details of **arrears**.

G11.5 The **buyer** is on **completion** to pay, in addition to any other money then due, an amount equal to all **arrears** of which details are set out in the **special conditions**.

G11.6 If those **arrears** are not **old arrears** the **seller** is to assign to the **buyer** all rights that the **seller** has to recover those **arrears**.

Part 3 Buyer not to pay for arrears

G11.7 Part 3 of this **condition** G11 applies where the **special conditions**:

- (a) so state; or
- (b) give no details of any **arrears**.

G11.8 While any **arrears** due to the **seller** remain unpaid the **buyer** must:

- (a) try to collect them in the ordinary course of management but need not take legal proceedings or forfeit the **tenancy**;
- (b) pay them to the **seller** within five **business days** of receipt in cleared funds (plus interest at the **interest rate** calculated on a daily basis for each subsequent day's delay in payment);
- (c) on request, at the cost of the **seller**, assign to the **seller** or as the **seller** may direct the right to demand and sue for **old arrears**, such assignment to be in such form as the **seller's** conveyancer may reasonably require;
- (d) if reasonably required, allow the **seller's** conveyancer to have on loan the counterpart of any **tenancy** against an undertaking to hold it to the **buyer's** order;
- (e) not without the consent of the **seller** release any tenant or surety from liability to pay **arrears** or accept a surrender of or forfeit any **tenancy** under which **arrears** are due; and
- (f) if the **buyer** disposes of the **lot** prior to recovery of all **arrears** obtain from the **buyer's** successor in title a covenant in favour of the **seller** in similar form to part 3 of this **condition** G11.

G11.9 Where the **seller** has the right to recover **arrears** it must not without the **buyer's** written consent bring insolvency proceedings against a tenant or seek the removal of goods from the **lot**.

G12 Management

G12.1 This **condition** G12 applies where the **lot** is sold subject to **tenancies**.

G12.2 The **seller** is to manage the **lot** in accordance with its standard management policies pending **completion**.

G12.3 The **seller** must consult the **buyer** on all management issues that would affect the **buyer** after **completion** (such as, but not limited to, an application for licence; a rent review; a variation, surrender, agreement to surrender or proposed forfeiture of a **tenancy**; or a new tenancy or agreement to grant a new tenancy) and:

- (a) the **seller** must comply with the **buyer's** reasonable requirements unless to do so would (but for the indemnity in paragraph (c)) expose the **seller** to a liability that the **seller** would not otherwise have, in which case the **seller** may act reasonably in such a way as to avoid that liability;
- (b) if the **seller** gives the **buyer** notice of the **seller's** intended act and the **buyer** does not object within five **business days** giving reasons for the objection the **seller**

may act as the **seller** intends; and

(c) the **buyer** is to indemnify the **seller** against all loss or liability the **seller** incurs through acting as the **buyer** requires, or by reason of delay caused by the **buyer**.

G13 Rent deposits

G13.1 This **condition** G13 applies where the **seller** is holding or otherwise entitled to money by way of rent deposit in respect of a **tenancy**. In this **condition** G13 "rent deposit deed" means the deed or other document under which the rent deposit is held.

G13.2 If the rent deposit is not assignable the **seller** must on **completion** hold the rent deposit on trust for the **buyer** and, subject to the terms of the rent deposit deed, comply at the cost of the **buyer** with the **buyer's** lawful instructions.

G13.3 Otherwise the **seller** must on **completion** pay and assign its interest in the rent deposit to the **buyer** under an assignment in which the buyer covenants with the **seller** to: (a) observe and perform the **seller's** covenants and conditions in the rent deposit deed and indemnify the **seller** in respect of any breach;

- (b) give notice of assignment to the tenant; and
- (c) give such direct covenant to the tenant as may be required by the rent deposit deed.

G14 VAT

G14.1 Where a **sale condition** requires money to be paid or other consideration to be given, the payer must also pay any **VAT** that is chargeable on that money or consideration, but only if given a valid **VAT** invoice.

G14.2 Where the **special conditions** state that no **VAT option** has been made the **seller** confirms that none has been made by it or by any company in the same **VAT** group nor will be prior to **completion**.

G15 Transfer as a going concern

G15.1 Where the **special conditions** so state:

- (a) the **seller** and the **buyer** intend, and will take all practicable steps (short of an appeal) to procure, that the sale is treated as a transfer of a going concern; and
- (b) this **condition** G15 applies.

G15.2 The **seller** confirms that the **seller**

- (a) is registered for **VAT**, either in the **seller's** name or as a member of the same **VAT** group; and
- (b) has (unless the sale is a standard-rated supply) made in relation to the **lot** a **VAT option** that remains valid and will not be revoked before **completion**.

G15.3 The **buyer** confirms that:

- (a) it is registered for **VAT**, either in the **buyer's** name or as a member of a **VAT** group;
- (b) it has made, or will make before **completion**, a **VAT option** in relation to the **lot** and will not revoke it before or within three months after **completion**;
- (c) article 5(2B) of the Value Added Tax (Special Provisions) Order 1995 does not apply to it; and
- (d) it is not buying the **lot** as a nominee for another person.

G15.4 The **buyer** is to give to the **seller** as early as possible before the **agreed completion date** evidence:

- (a) of the **buyer's** **VAT** registration;
- (b) that the **buyer** has made a **VAT option**; and
- (c) that the **VAT option** has been notified in writing to HM Revenue and Customs; and if it does not produce the relevant evidence at least two **business days** before the **agreed completion date**, **condition** G14.1 applies at **completion**.

G15.5 The **buyer** confirms that after **completion** the **buyer** intends to:

- (a) retain and manage the **lot** for the **buyer's** own benefit as a continuing business as a going concern subject to and with the benefit of the **tenancies**; and
- (b) collect the rents payable under the **tenancies** and charge **VAT** on them

G15.6 If, after **completion**, it is found that the sale of the **lot** is not a transfer of a going concern then:

- (a) the **seller's** conveyancer is to notify the **buyer's** conveyancer of that finding and provide a **VAT** invoice in respect of the sale of the **lot**;
- (b) the **buyer** must within five **business days** of receipt of the **VAT** invoice pay to the **seller** the **VAT** due; and

	(c) if VAT is payable because the buyer has not complied with this condition G15, the buyer must pay and indemnify the seller against all costs, interest, penalties or surcharges that the seller incurs as a result.		under TUPE and any special conditions in respect of the Transferring Employees.
G16	Capital allowances		(c) The buyer and the seller acknowledge that pursuant and subject to TUPE , the contracts of employment between the Transferring Employees and the seller will transfer to the buyer on completion .
G16.1	This condition G16 applies where the special conditions state that there are capital allowances available in respect of the lot .		(d) The buyer is to keep the seller indemnified against all liability for the Transferring Employees after completion .
G16.2	The seller is promptly to supply to the buyer all information reasonably required by the buyer in connection with the buyer's claim for capital allowances.	G21	Environmental
G16.3	The value to be attributed to those items on which capital allowances may be claimed is set out in the special conditions .	G21.1	This condition G21 only applies where the special conditions so provide.
G16.4	The seller and buyer agree: (a) to make an election on completion under Section 198 of the Capital Allowances Act 2001 to give effect to this condition G16; and (b) to submit the value specified in the special conditions to HM Revenue and Customs for the purposes of their respective capital allowance computations.	G21.2	The seller has made available such reports as the seller has as to the environmental condition of the lot and has given the buyer the opportunity to carry out investigations (whether or not the buyer has read those reports or carried out any investigation) and the buyer admits that the price takes into account the environmental condition of the lot .
G17	Maintenance agreements	G21.3	The buyer agrees to indemnify the seller in respect of all liability for or resulting from the environmental condition of the lot .
G17.1	The seller agrees to use reasonable endeavours to transfer to the buyer , at the buyer's cost, the benefit of the maintenance agreements specified in the special conditions .	G22	Service Charge
G17.2	The buyer must assume, and indemnify the seller in respect of, all liability under such contracts from the actual completion date .	G22.1	This condition G22 applies where the lot is sold subject to tenancies that include service charge provisions.
G18	Landlord and Tenant Act 1987	G22.2	No apportionment is to be made at completion in respect of service charges.
G18.1	This condition G18 applies where the sale is a relevant disposal for the purposes of part I of the Landlord and Tenant Act 1987.	G22.3	Within two months after completion the seller must provide to the buyer a detailed service charge account for the service charge year current on completion showing: (a) service charge expenditure attributable to each tenancy ; (b) payments on account of service charge received from each tenant; (c) any amounts due from a tenant that have not been received; (d) any service charge expenditure that is not attributable to any tenancy and is for that reason irrecoverable.
G18.2	The seller warrants that the seller has complied with sections 5B and 7 of that Act and that the requisite majority of qualifying tenants has not accepted the offer.	G22.4	In respect of each tenancy , if the service charge account shows that: (a) payments on account (whether received or still then due from a tenant) exceed attributable service charge expenditure, the seller must pay to the buyer an amount equal to the excess when it provides the service charge account; (b) attributable service charge expenditure exceeds payments on account (whether those payments have been received or are still then due), the buyer must use all reasonable endeavours to recover the shortfall from the tenant at the next service charge reconciliation date and pay the amount so recovered to the seller within five business days of receipt in cleared funds; but in respect of payments on account that are still due from a tenant condition G11 (arrears) applies.
G19	Sale by practitioner	G22.5	In respect of service charge expenditure that is not attributable to any tenancy the seller must pay the expenditure incurred in respect of the period before actual completion date and the buyer must pay the expenditure incurred in respect of the period after actual completion date . Any necessary monetary adjustment is to be made within five business days of the seller providing the service charge account to the buyer .
G19.1	This condition G19 applies where the sale is by a practitioner either as seller or as agent of the seller .	G22.6	If the seller holds any reserve or sinking fund on account of future service charge expenditure or a depreciation fund: (a) the seller must pay it (including any interest earned on it) to the buyer on completion ; and (b) the buyer must covenant with the seller to hold it in accordance with the terms of the tenancies and to indemnify the seller if it does not do so.
G19.2	The practitioner has been duly appointed and is empowered to sell the lot .	G23.	Rent reviews
G19.3	Neither the practitioner nor the firm or any member of the firm to which the practitioner belongs has any personal liability in connection with the sale or the performance of the seller's obligations. The transfer is to include a declaration excluding that personal liability.	G23.1	This condition G23 applies where the lot is sold subject to a tenancy under which a rent review due on or before the actual completion date has not been agreed or determined.
G19.4	The lot is sold: (a) in its condition at completion ; (b) for such title as the seller may have; and (c) with no title guarantee; and the buyer has no right to terminate the contract or any other remedy if information provided about the lot is inaccurate, incomplete or missing.	G23.2	The seller may continue negotiations or rent review proceedings up to the actual completion date but may not agree the level of the revised rent or commence rent review proceedings without the written consent of the buyer , such consent not to be unreasonably withheld or delayed.
G19.5	Where relevant: (a) the documents must include certified copies of those under which the practitioner is appointed, the document of appointment and the practitioner's acceptance of appointment; and (b) the seller may require the transfer to be by the lender exercising its power of sale under the Law of Property Act 1925.		
G19.6	The buyer understands this condition G19 and agrees that it is fair in the circumstances of a sale by a practitioner .		
G20 TUPE			
G20.1	If the special conditions state "There are no employees to which TUPE applies", this is a warranty by the seller to this effect.		
G20.2	If the special conditions do not state "There are no employees to which TUPE applies" the following paragraphs apply: (a) The seller must notify the buyer of those employees whose contracts of employment will transfer to the buyer on completion (the "Transferring Employees"). This notification must be given to the buyer not less than 14 days before completion . (b) The buyer confirms that it will comply with its obligations		

G23.3	Following completion the buyer must complete rent review negotiations or proceedings as soon as reasonably practicable but may not agree the level of the revised rent without the written consent of the seller , such consent not to be unreasonably withheld or delayed.	G27 G27.1	Registration at the Land Registry This condition G27.1 applies where the lot is leasehold and its sale either triggers first registration or is a registrable disposition. The buyer must at its own expense and as soon as practicable: (a) procure that it becomes registered at Land Registry as proprietor of the lot ; (b) procure that all rights granted and reserved by the lease under which the lot is held are properly noted against the affected titles; and (c) provide the seller with an official copy of the register relating to such lease showing itself registered as proprietor.
G23.4	The seller must promptly: (a) give to the buyer full details of all rent review negotiations and proceedings, including copies of all correspondence and other papers; and (b) use all reasonable endeavours to substitute the buyer for the seller in any rent review proceedings.	G27.2	This condition G27.2 applies where the lot comprises part of a registered title. The buyer must at its own expense and as soon as practicable: (a) apply for registration of the transfer ; (b) provide the seller with an official copy and title plan for the buyer's new title; and (c) join in any representations the seller may properly make to Land Registry relating to the application.
G23.5	The seller and the buyer are to keep each other informed of the progress of the rent review and have regard to any proposals the other makes in relation to it.	G28 G28.1	Notices and other communications All communications, including notices, must be in writing. Communication to or by the seller or the buyer may be given to or by their conveyancers.
G23.6	When the rent review has been agreed or determined the buyer must account to the seller for any increased rent and interest recovered from the tenant that relates to the seller's period of ownership within five business days of receipt of cleared funds.	G28.2	A communication may be relied on if: (a) delivered by hand; or (b) made electronically and personally acknowledged (automatic acknowledgement does not count); or (c) there is proof that it was sent to the address of the person to whom it is to be given (as specified in the sale memorandum) by a postal service that offers normally to deliver mail the next following business day .
G23.7	If a rent review is agreed or determined before completion but the increased rent and any interest recoverable from the tenant has not been received by completion the increased rent and any interest recoverable is to be treated as arrears .	G28.3	A communication is to be treated as received: (a) when delivered, if delivered by hand; or (b) when personally acknowledged, if made electronically; but if delivered or made after 1700 hours on a business day a communication is to be treated as received on the next business day .
G23.8	The seller and the buyer are to bear their own costs in relation to rent review negotiations and proceedings.	G28.4	A communication sent by a postal service that offers normally to deliver mail the next following business day will be treated as received on the second business day after it has been posted.
G24 G24.1	Tenancy renewals This condition G24 applies where the tenant under a tenancy has the right to remain in occupation under part II of the Landlord and Tenant Act 1954 (as amended) and references to notices and proceedings are to notices and proceedings under that Act.	G29	Contracts (Rights of Third Parties) Act 1999 No one is intended to have any benefit under the contract pursuant to the Contract (Rights of Third Parties) Act 1999.
G24.2	Where practicable, without exposing the seller to liability or penalty, the seller must not without the written consent of the buyer (which the buyer must not unreasonably withhold or delay) serve or respond to any notice or begin or continue any proceedings.	G30 G17.2 G25.3	Extra General Conditions The following general conditions are to be treated as being amended as follows: the word "actual" shall be replaced by the word "agreed" (b) the words "or cost" shall be added at the end.
G24.3	If the seller receives a notice the seller must send a copy to the buyer within five business days and act as the buyer reasonably directs in relation to it.		
G24.4	Following completion the buyer must: (a) with the co-operation of the seller take immediate steps to substitute itself as a party to any proceedings; (b) use all reasonable endeavours to conclude any proceedings or negotiations for the renewal of the tenancy and the determination of any interim rent as soon as reasonably practicable at the best rent or rents reasonably obtainable; and (c) if any increased rent is recovered from the tenant (whether as interim rent or under the renewed tenancy) account to the seller for the part of that increase that relates to the seller's period of ownership of the lot within five business days of receipt of cleared funds.		
G24.5	The seller and the buyer are to bear their own costs in relation to the renewal of the tenancy and any proceedings relating to this.		
G25 G25.1	Warranties Available warranties are listed in the special conditions . G25.2 Where a warranty is assignable the seller must: (a) on completion assign it to the buyer and give notice of assignment to the person who gave the warranty; and (b) apply for (and the seller and the buyer must use all reasonable endeavours to obtain) any consent to assign that is required. If consent has not been obtained by completion the warranty must be assigned within five business days after the consent has been obtained.		
G25.3	If a warranty is not assignable the seller must after completion : (a) hold the warranty on trust for the buyer ; and (b) at the buyer's cost comply with such of the lawful instructions of the buyer in relation to the warranty as do not place the seller in breach of its terms or expose the seller to any liability or penalty.		
G26	No assignment The buyer must not assign, mortgage or otherwise transfer or part with the whole or any part of the buyer's interest under this contract .		

Head Office

Suite 1, Albion House
No.2 Etruria Office Village
Forge Lane
Festival Park
Stoke-on-Trent
ST1 5RQ



Alsager

☎ 01270 877 778

@ alsager@bjbmail.com

Cannock

☎ 01543 500030

@ cannock@bjbmail.com

Congleton

☎ 01260 280 000

@ congleton@bjbmail.com

Crewe

☎ 01270 213 541

@ crewe@bjbmail.com

Hanley

☎ 01782 202 600

@ hanley@bjbmail.com

Kidsgrove

☎ 01782 784 442

@ kidsgrove@bjbmail.com

Longton

☎ 01782 594 777

@ longton@bjbmail.com

Macclesfield

☎ 01625 869996

@ macclesfield@bjbmail.com

Nantwich

☎ 01270 623 444

@ nantwich@bjbmail.com

Newcastle

☎ 01782 622 155

@ newcastle@bjbmail.com

Northwich

☎ 01606 352888

@ northwich@bjbmail.com

Sandbach

☎ 01270 768 919

@ sandbach@bjbmail.com

Stone

☎ 01785 813 400

@ stone@bjbmail.com

Stafford

☎ 01785 246 000

@ stafford@bjbmail.com

Winsford

☎ 01606 593444

@ winsford@bjbmail.com

Commercial

☎ 0800 090 2290

@ commercial@bjbmail.com

Land & New Homes

☎ 01782 211147

@ residential-land@bjbmail.com

Portfolio Management

☎ 01782 211144

@ lettings@bjbmail.com

Survey Department

☎ 0800 280 0699

@ survey@bjbmail.com

Property Auctions

☎ 0800 090 2200

@ auction@bjbmail.com

